

ASSEMBLING INSTRUCTIONS

1610

CAUTION :

THIS ITEM IS MADE OF LAMINATED PARTICLE BOARD AND MEDIUM DENSITY FIBRE BOARD

TO BE ASSEMBLED ON A DRY, SOFT, SMOOTH AND CLEAN SURFACE . DO NOT USE DETERGENT OR CHEMICAL. AVOID DAMP AND SUNLIGHT.

STEP 1	CHECK YOUR HARDWARE	6647
	SCREW #9 X 1 1/2"	10 PCS
	SCREW CAP	10 PCS
	WOOD DOWEL M8 X 25	10 PCS
	CORNER BLOCK	4 PCS
	SCREW M3 X 20	4 PCS
	SHELF SUPPORT	5 PCS
	HANDLE	2 PCS
	SCREW PAN HEAD #6 X 22	4 PCS
	BRACKET-L	1 PC
	BRACKET-R	1 PC
	SCREW M4 X 25	4 PCS
	HINGES	4 PCS
	SCREW M3.5 X 14	16 PCS

TOOLS REQUIRED :	
	SCREW DRIVER
	HAMMER

STEP 2	<p>DETAIL A</p> <p>WOOD DOWEL M8 X 25</p> <p>3 X 2</p> <p>6</p> <p>DETAIL A</p>
--------	---

STEP 3	<p>DETAIL A</p> <p>1</p> <p>2</p> <p>DETAIL B</p> <p>SCREW M4 X 25</p> <p>BRACKET-L</p> <p>DETAIL A</p> <p>BRACKET-R</p> <p>DETAIL B</p>
--------	--

STEP 4	<p>DETAIL A</p> <p>7</p> <p>8</p> <p>DETAIL B</p> <p>SCREW M3.5 X 14</p> <p>HINGES</p> <p>DETAIL A</p> <p>HANDLE</p> <p>DETAIL B</p> <p>SCREW PAN HEAD #6 X 22</p>
--------	--

STEP 5	<p>3</p> <p>6</p> <p>3</p> <p>SCREW #9 X 1 1/2"</p>
--------	---

STEP 6	<p>3</p> <p>1</p> <p>3</p> <p>SCREW #9 X 1 1/2"</p>
--------	---

STEP 7	
--------	--

STEP 8	<p>2</p> <p>3</p> <p>3</p> <p>SCREW #9 X 1 1/2"</p>
--------	---

STEP 9	<p>2</p> <p>DETAIL A</p> <p>1</p> <p>DETAIL A</p> <p>6</p> <p>SHELF SUPPORT</p> <p>DETAIL A</p>
--------	---

STEP 10	<p>1</p> <p>2</p> <p>4</p> <p>4</p>
---------	-------------------------------------

STEP 11	<p>5</p> <p>1</p> <p>DETAIL A</p> <p>CORNER BLOCK</p> <p>SCREW M3 X 20</p> <p>DETAIL A</p>
---------	--

STEP 12	<p>Hinges Adjustment Facilities</p> <p>A. Lateral adjustment by the slacking screw adjusting</p> <p>B. Vertical adjustment via slot in the mounting plate</p> <p>C. Front-to-Back by the slacking the hinges arm mounting screw</p> <p>2</p> <p>8</p> <p>DETAIL A</p> <p>SCREW M3.5 X 14</p> <p>DETAIL A</p>
---------	--

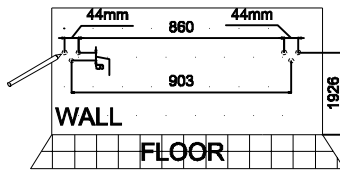
STEP 13	<p>SCREW CAP</p> <p>DETAIL A</p> <p>1</p> <p>DETAIL A</p>
---------	---

ASSEMBLING INSTRUCTIONS

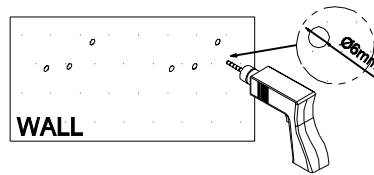
CAUTION :

THIS ITEM IS MADE OF LAMINATED PARTICLE BOARD AND MEDIUM DENSITY FIBRE BOARD TO BE ASSEMBLED ON A DRY, SOFT, SMOOTH AND CLEAN SURFACE . DO NOT USE DETERGENT OR CHEMICAL. AVOID DAMP AND DIRECT SUNLIGHT.

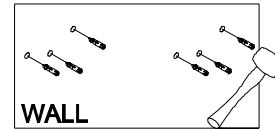
Wall Bracket Installation Guide



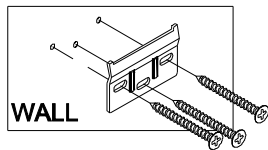
Measurement Guide
All units are in millimeters.



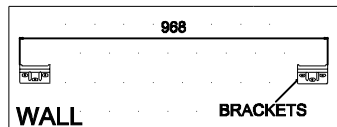
1.1 Use a drill to make all pilot holes.



1.2 Insert a Drywall Anchor into each of the nine holes.

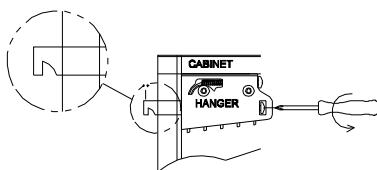


1.3 Install bracket with 3 screws.
Repeat with other brackets.

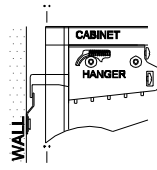


1.4 Ensure your bracket measurement are correct before moving on to attaching the cabinet to the wall.

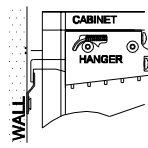
Cabinet-to-Wall Installation Guide



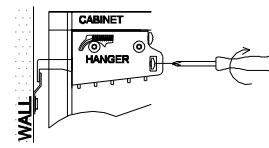
1.5 Set the hanger latch as shown.



1.6 Hook cabinet onto latch.



1.7 Push cabinet down onto latch.

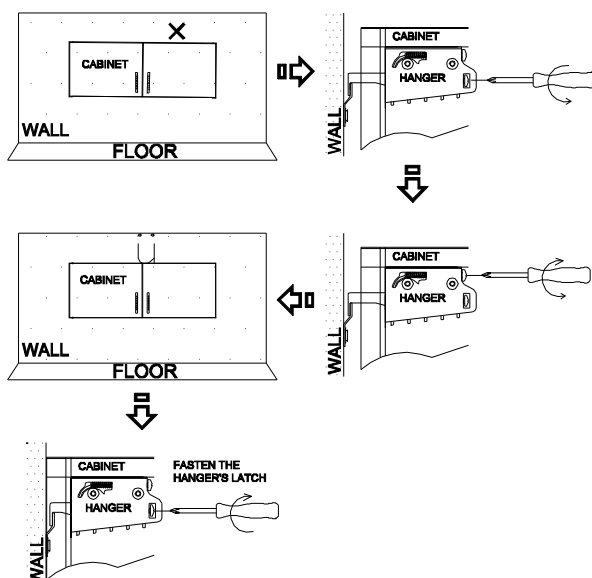


1.8 Fasten the hanger's latch with the screw.

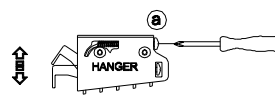
Is the cabinet not hanging quite right?

Here are some adjustment tips.

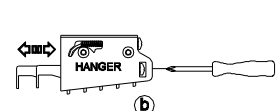
If your cabinet isn't level, follow this guide



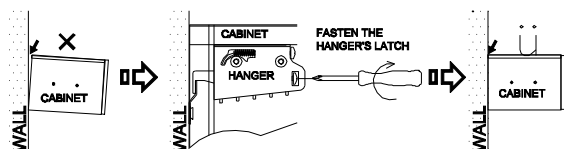
Adjustment Screw A



Adjustment Screw B



If your cabinet is pulling away from the wall, follow this guide



1.9 Once the cabinet is installed and adjusted, install the latch covers.

