



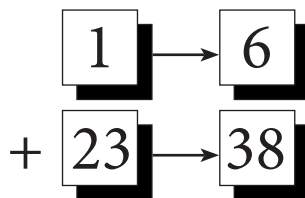
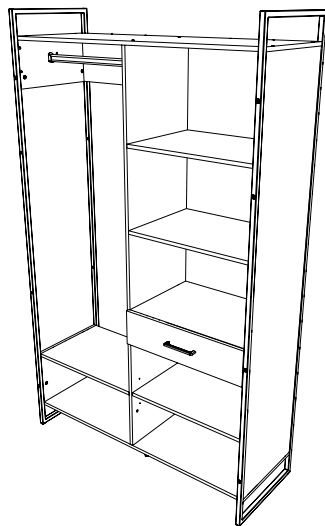
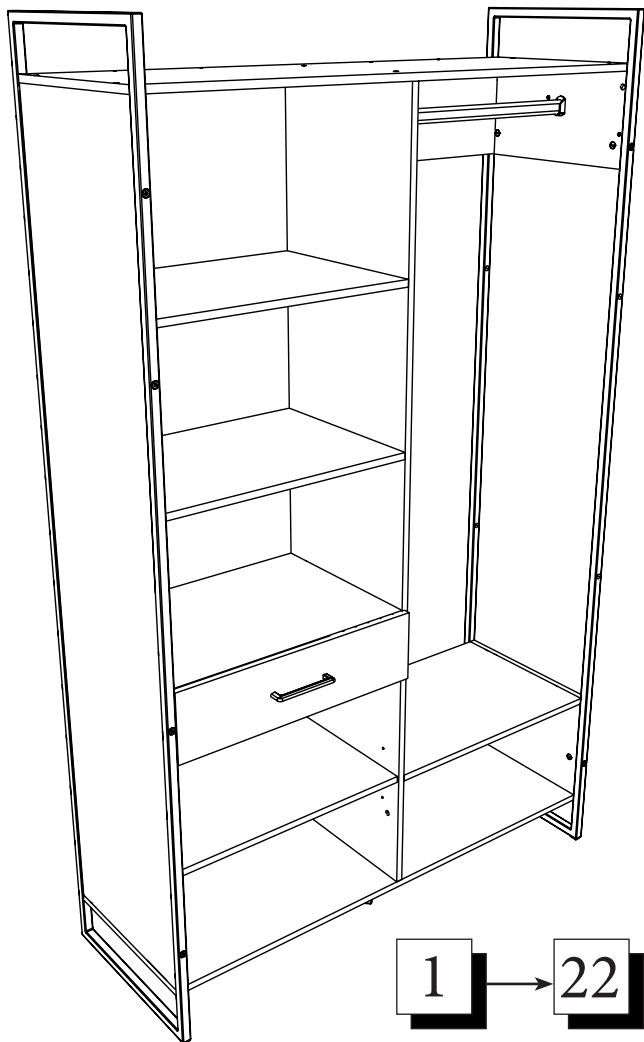
EKIPA

0094NOTIC6276



FRANCE

Kit dressing



200,3cm

120,2 cm

44,5cm

FR Remerciements :

Nous vous remercions d'avoir choisi un meuble créé et fabriqué par Ekipa et espérons qu'il vous donnera entière satisfaction.

EN Thanks :

Thank you for choosing furniture designed and manufactured by Ekipa. We hope you are totally satisfied your purchase.

ES Agradecimientos :

Les damos las gracias por haber elegido un mueble diseñado y fabricado por el Ekipa y esperamos que sea de su total agrado.

DE Danksagung:

Wir danken Ihnen für den Kauf eines Frankreich von der Ekipa entworfenen und hergestellten Möbelstücks und hoffen, dass Sie es zu Ihrer vollkommenen Zufriedenheit finden werden.

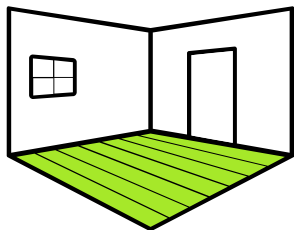


Temps de montage : 2h00 **contact@parisot.com**

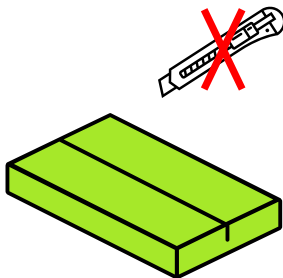
Conseils de préparation au montage : 15 min



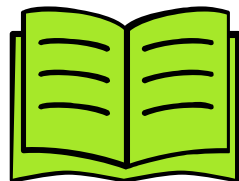
<https://qrco.de/bcJeNz>



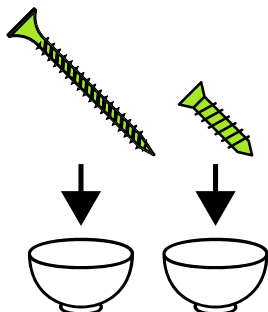
Faire un peu de place



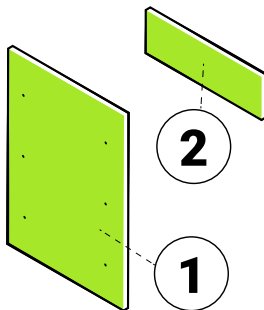
Pas d'outils tranchants



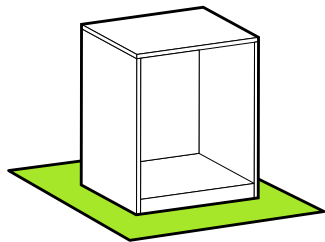
Bien suivre les instructions de la notice de montage



Trier vos quincailleries

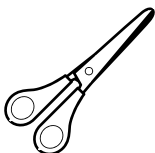
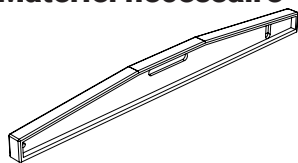


Repérer vos pièces

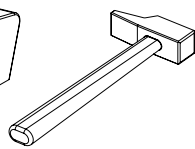
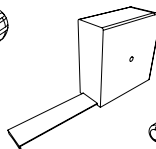


Protéger votre sol

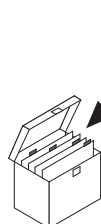
Matériel nécessaire



&

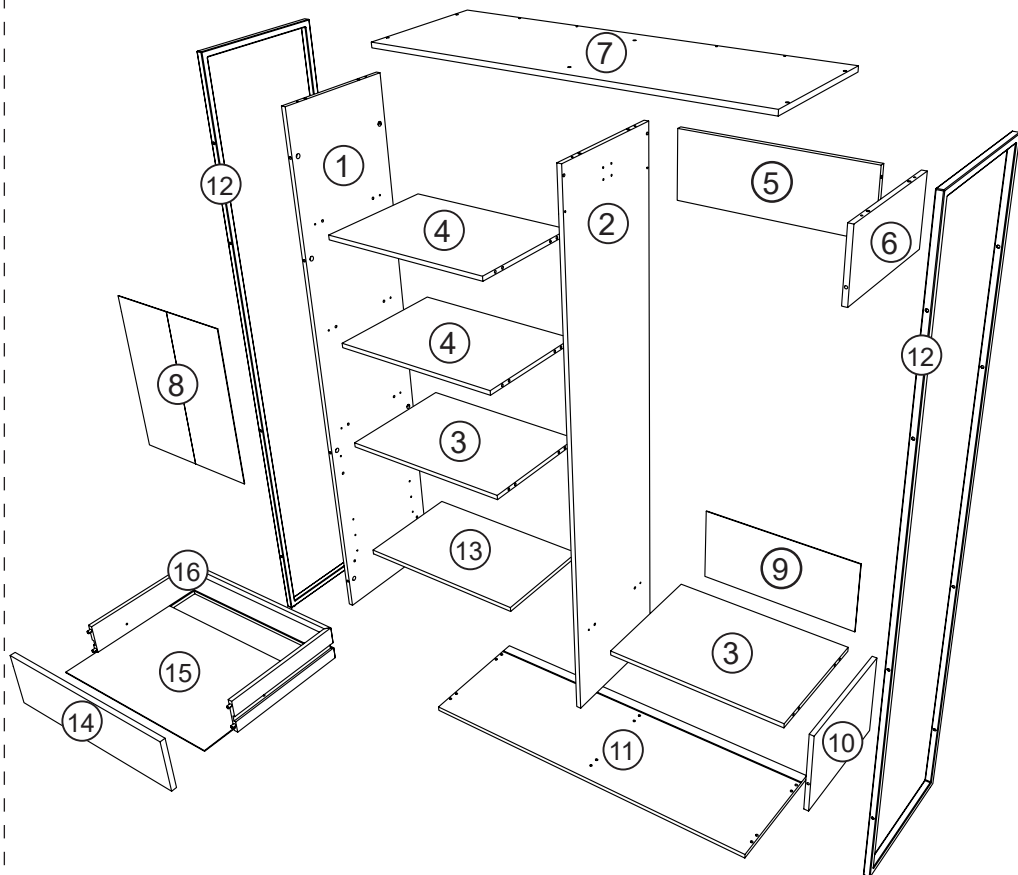


Conseils d'entretien





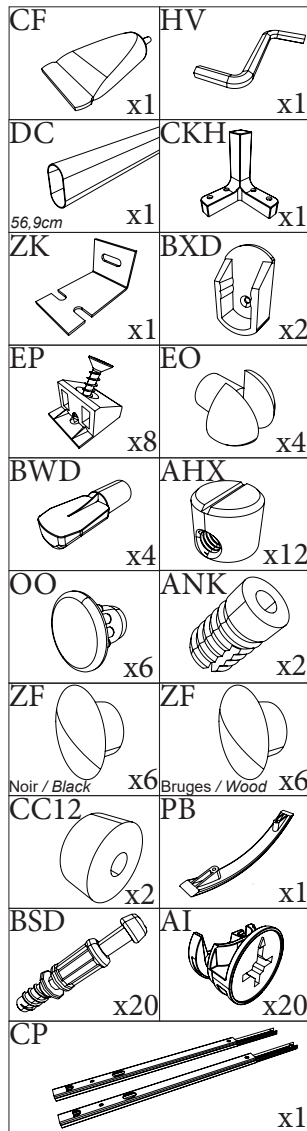
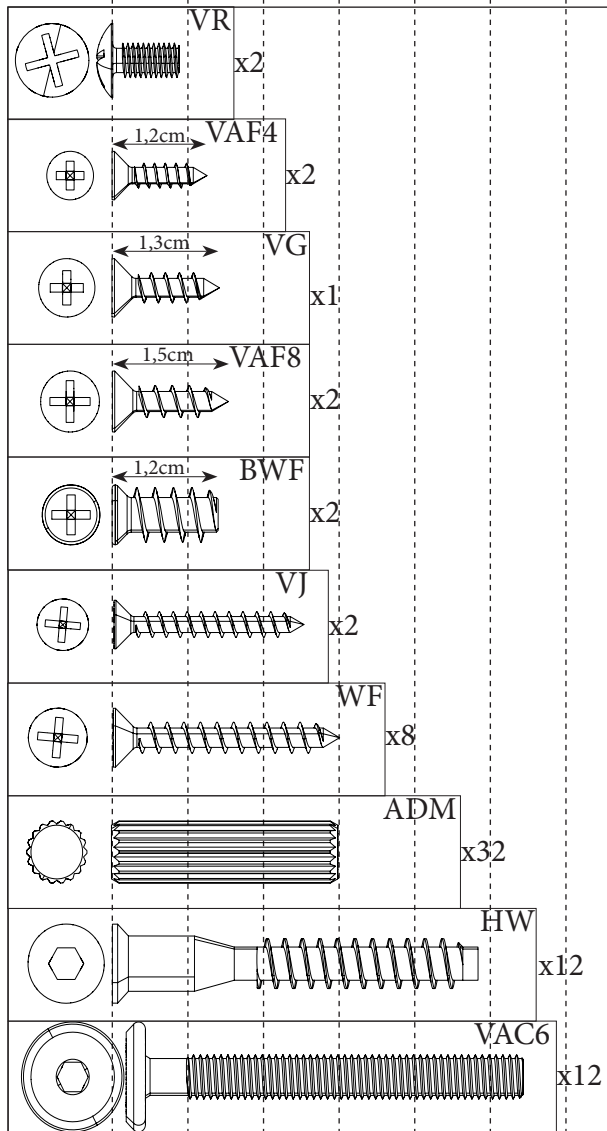
Repérer vos pièces

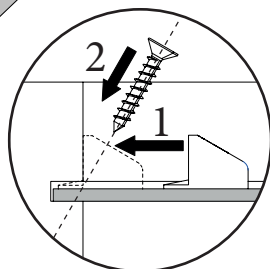
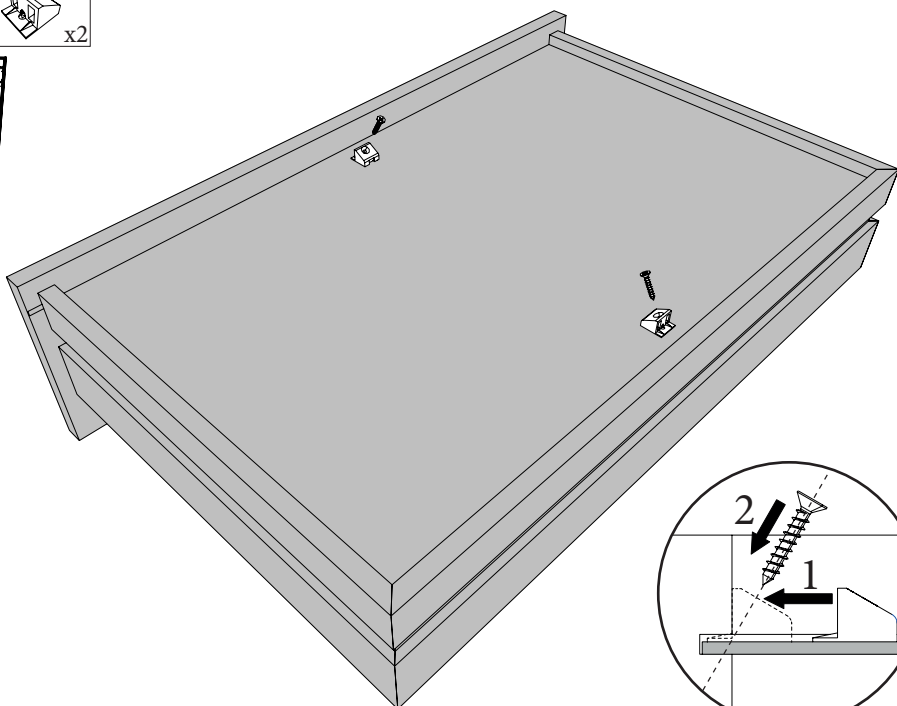
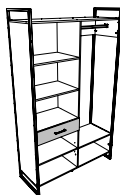
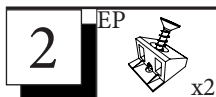
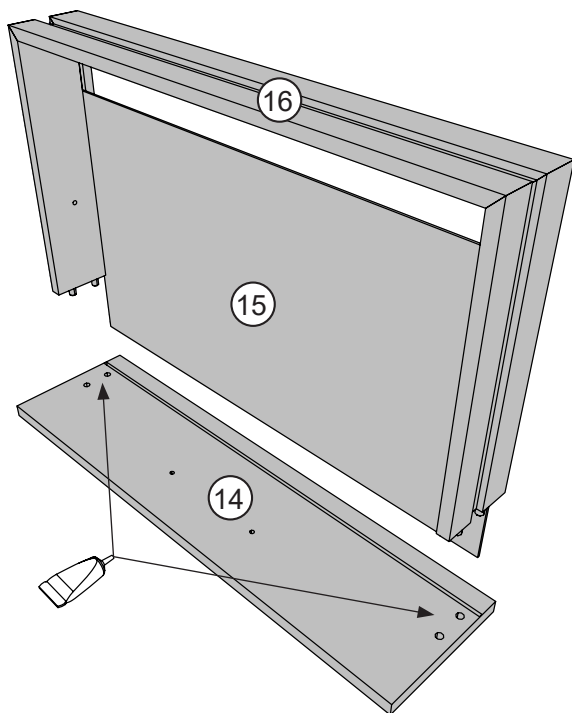
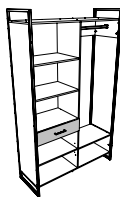
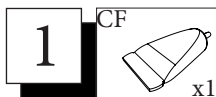


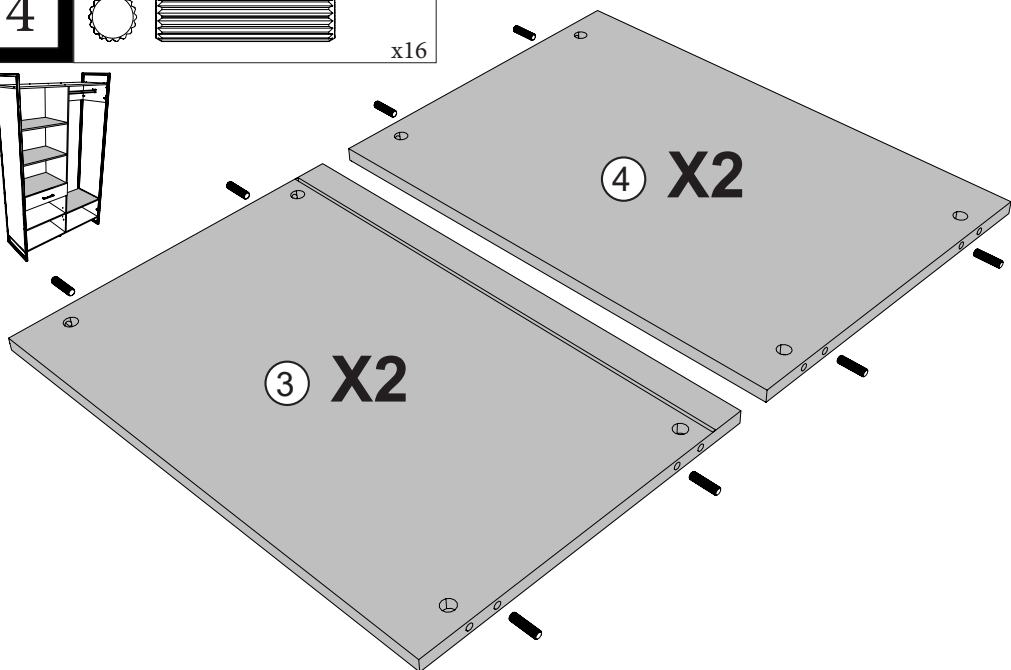
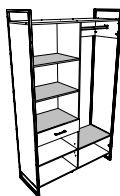
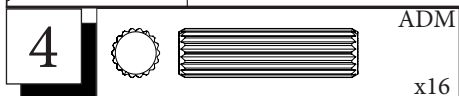
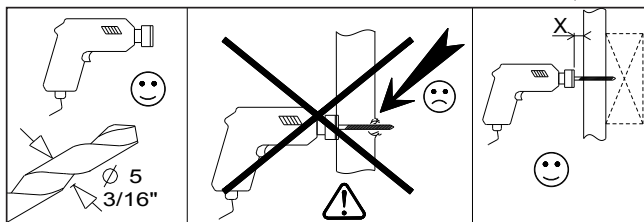
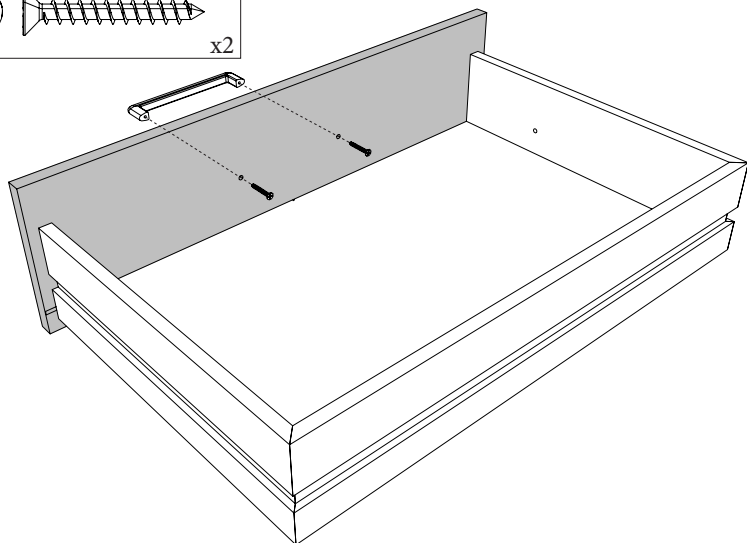
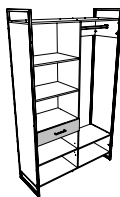
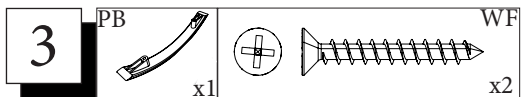
Rep	Qté	cm			Rep	Qté	cm		
01	1	175,6	39,9	1,5	09	1	57,6	27,4	0,25
02	1	175,6	39,9	1,5	10	1	27,8	39,9	1,5
03	2	57,6	39,9	1,5	11	1	119,8	39,9	1,5
04	2	57,6	39,9	1,5	12	2	200	44	2
05	1	57,6	19,9	1,5	13	1	57,6	35,5	1,5
06	1	20	39,9	1,5	14	1	57,9	15,6	1,5
07	1	119,8	39,9	1,5	15	1	54,1	34,9	0,25
08	1	68,4	57,5	0,25	16	1	125,5	10	1,25





0 1cm 2 3 4 5 6








5

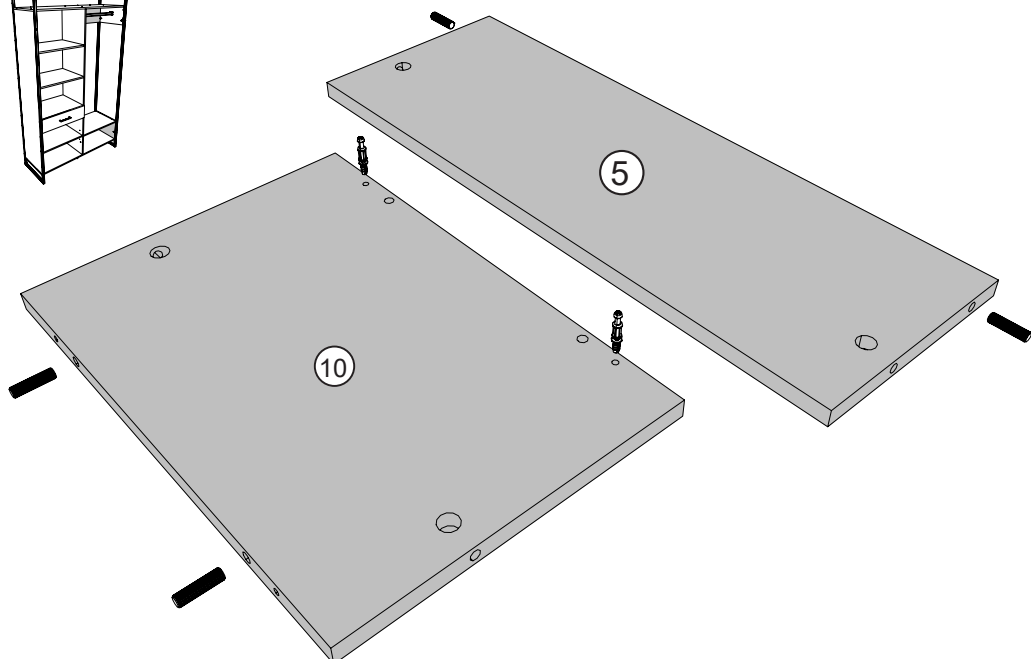
ADM

BSD




x4

x2





6

BSD

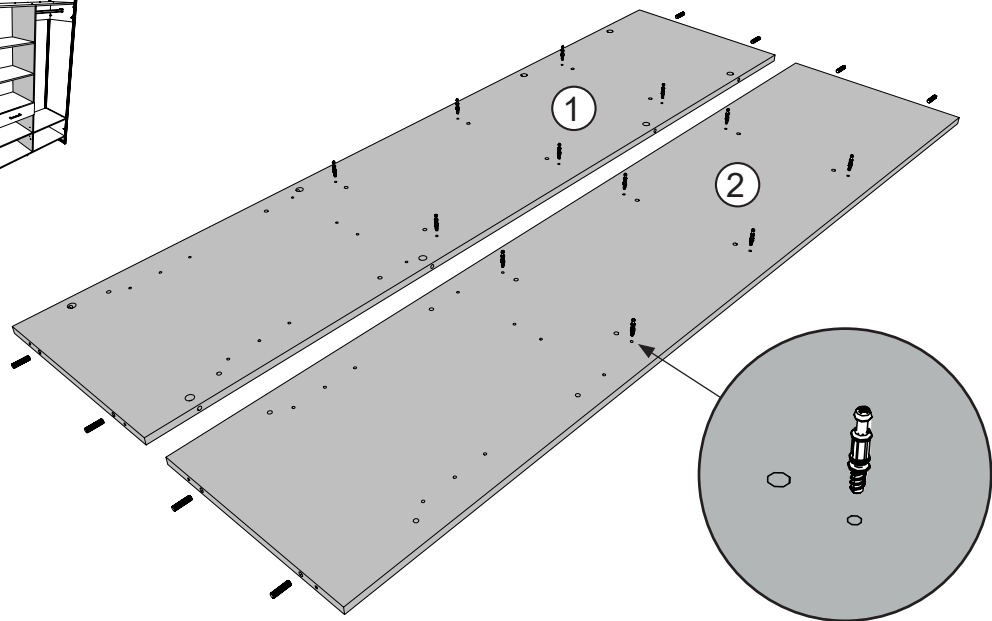
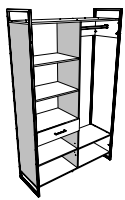


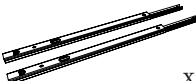
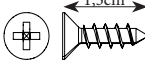
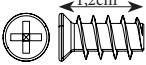

x12

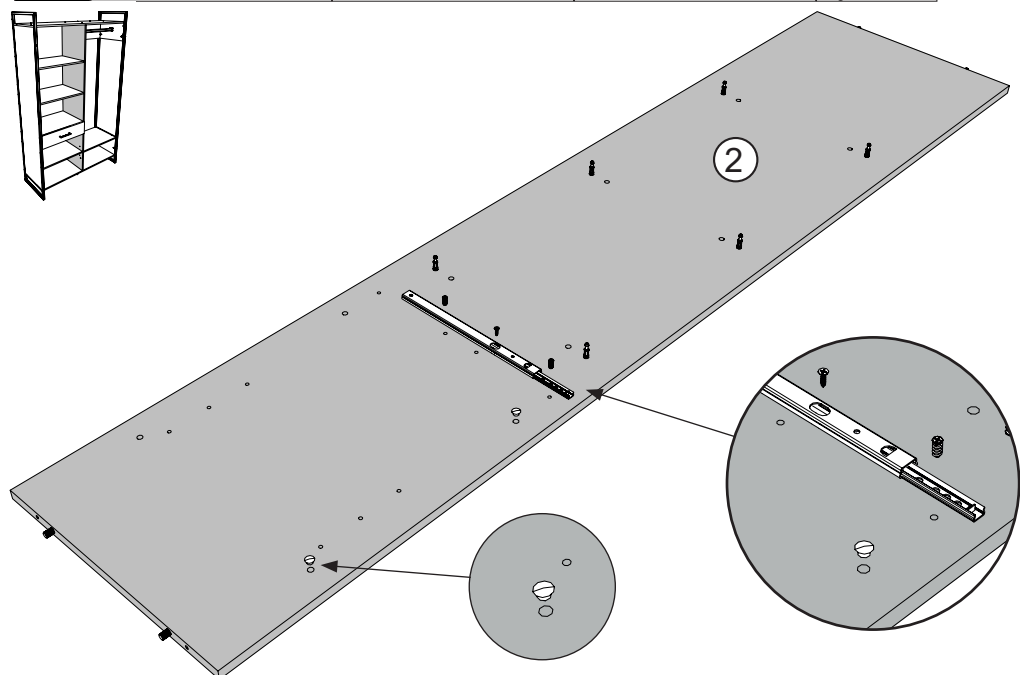
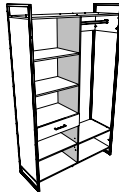






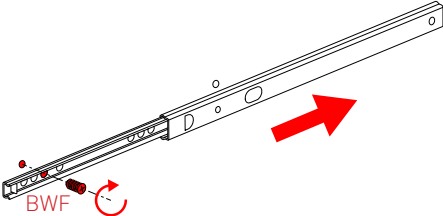
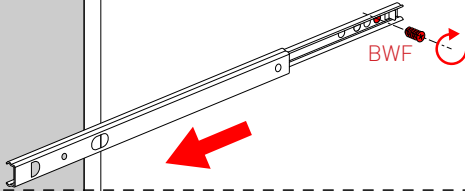
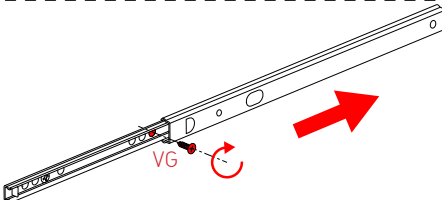
ADM

x8



7	CP		x1		1.3cm	VG	x1		1.2cm	BWF	ZF	x2		Bruges / Wood	x2



Extérieur du meuble		 ✓  ✗	
1			
2			
3			

8

BXD



x1



VAF4

x1

OO



x3

ZF



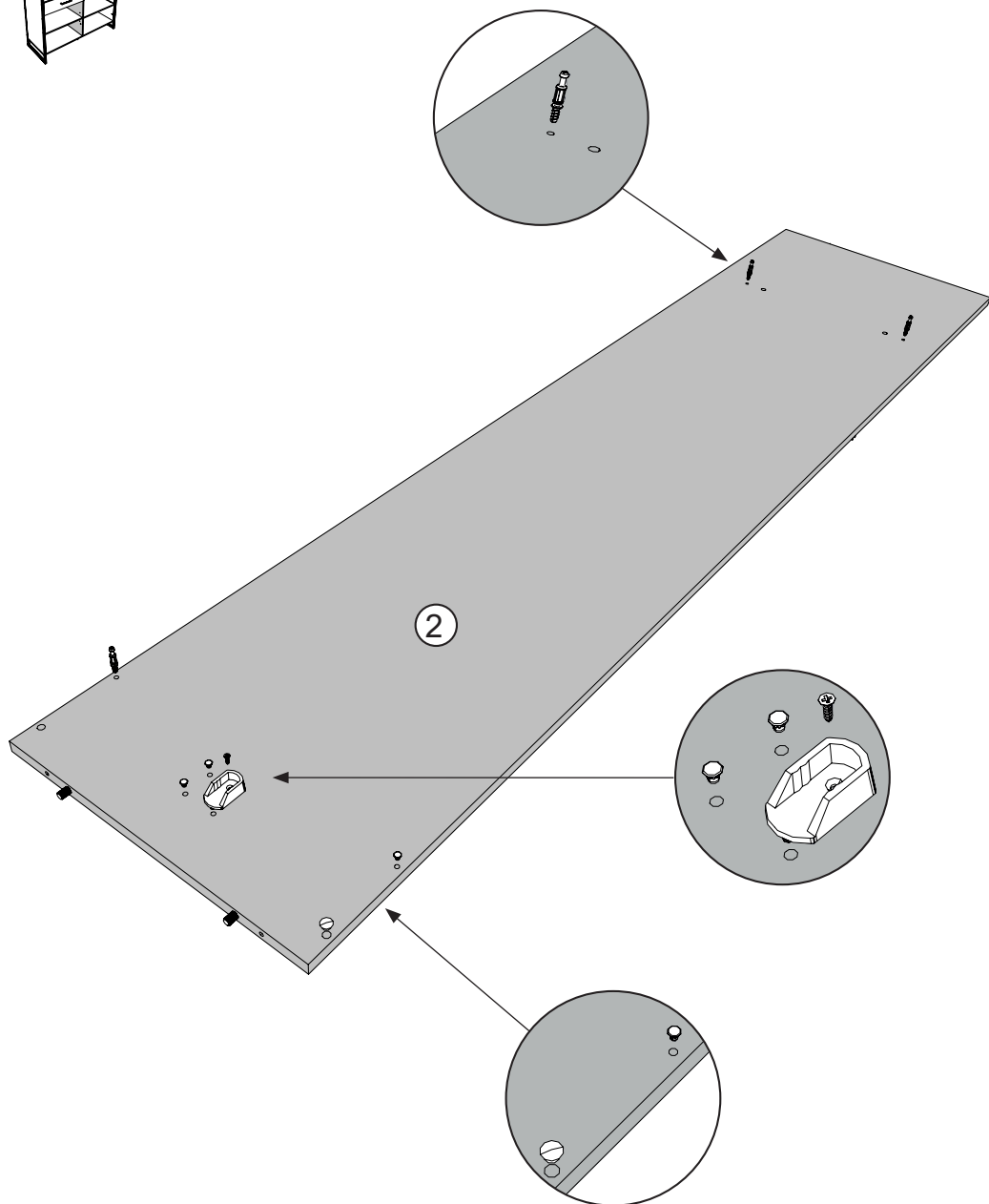
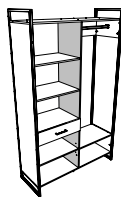
Bruges / Wood

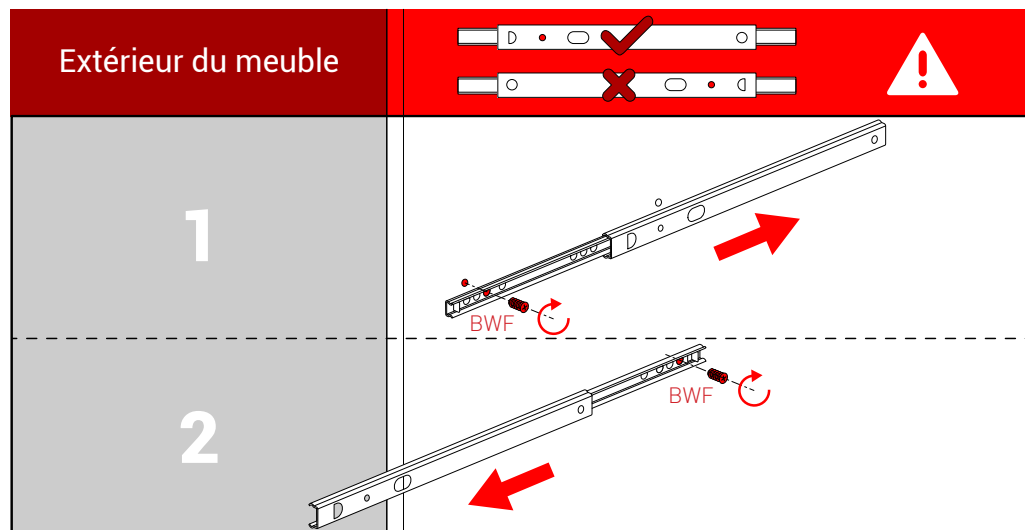
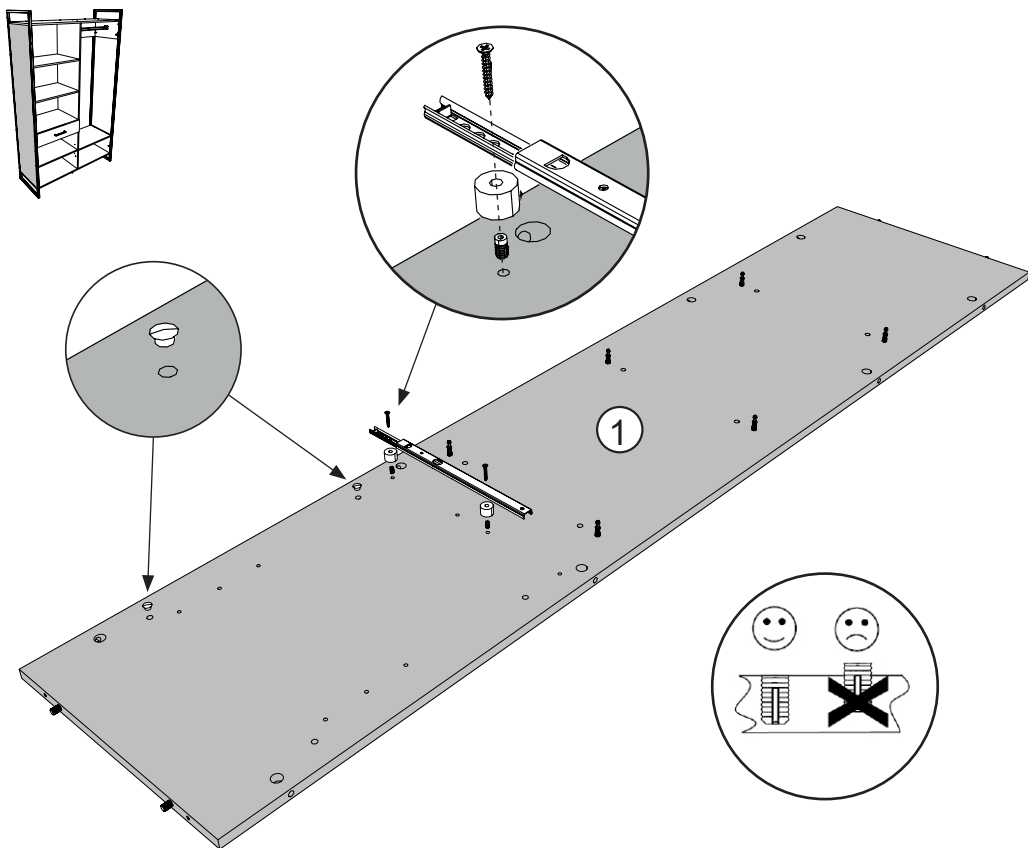
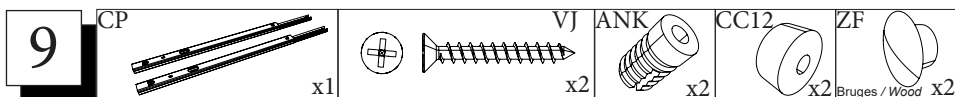
x1

BSD



x3



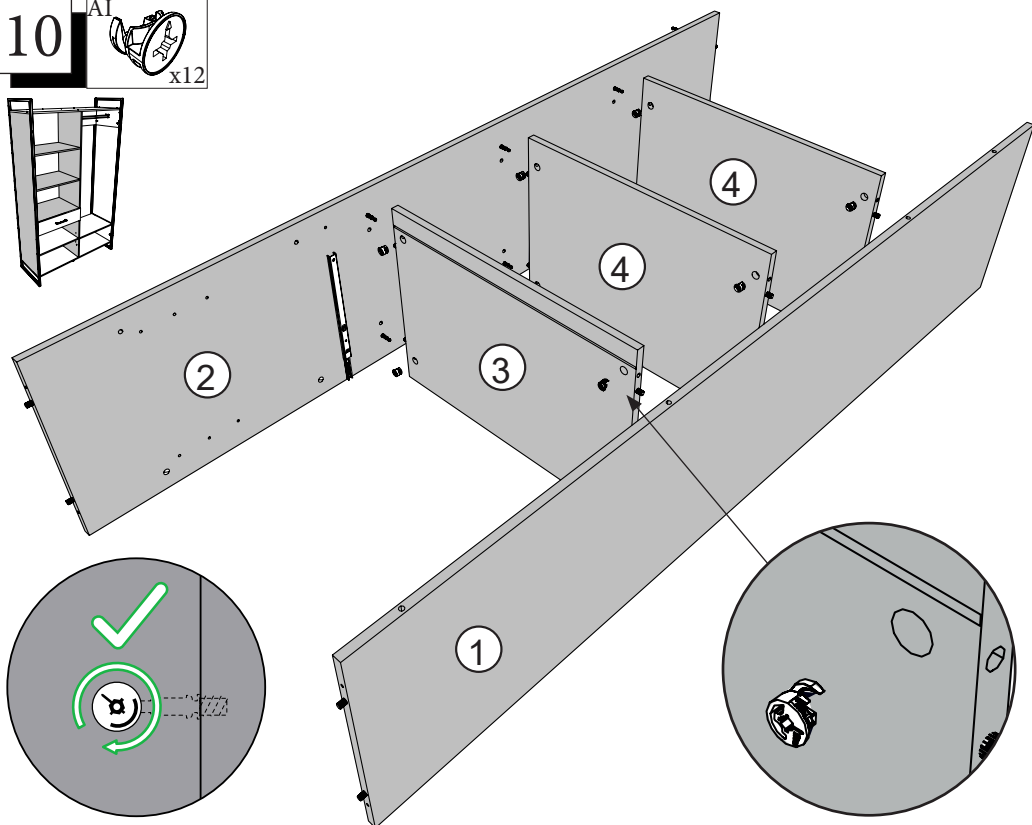
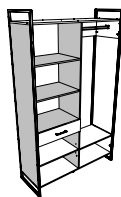


10

AI



x12



11



x2



x1



x1

OO



x1

ZF



x3

Bruges / Wood

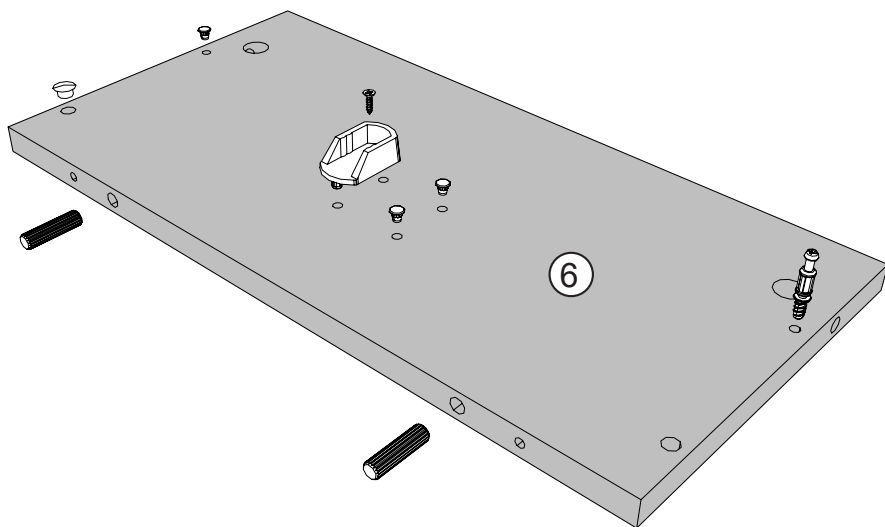
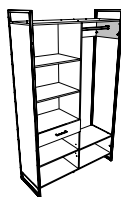


x1

BSD



x1

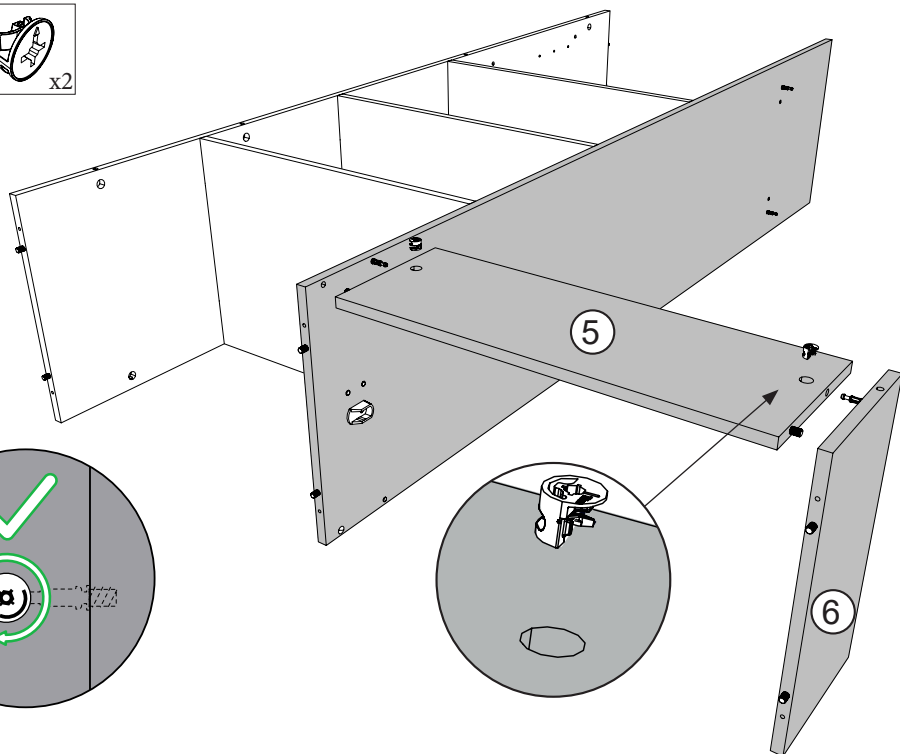
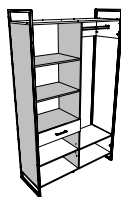


12

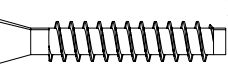
A1



x2



13

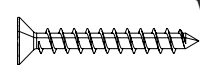


HW/HV

x6

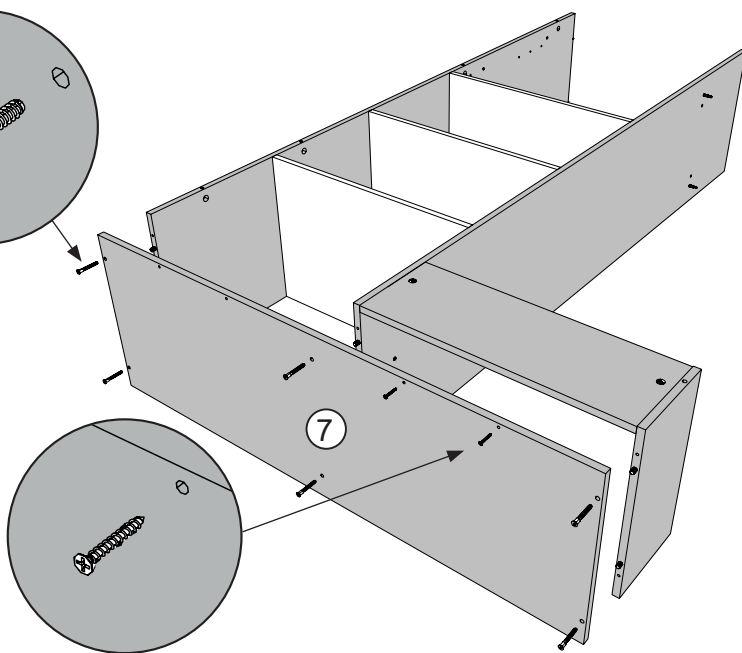
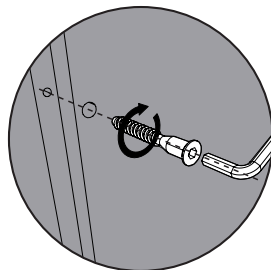
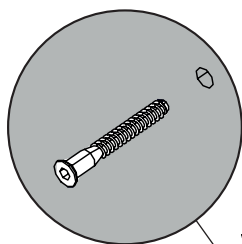
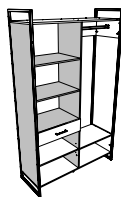


x1

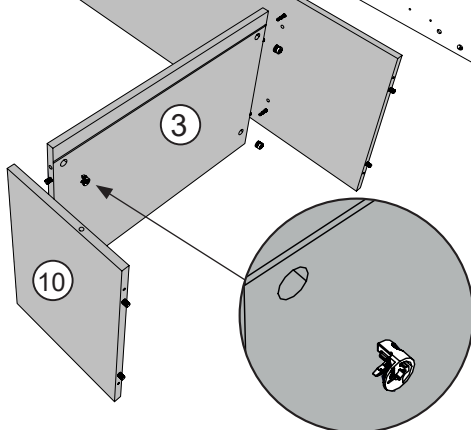
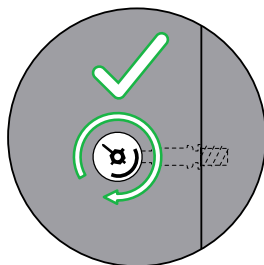
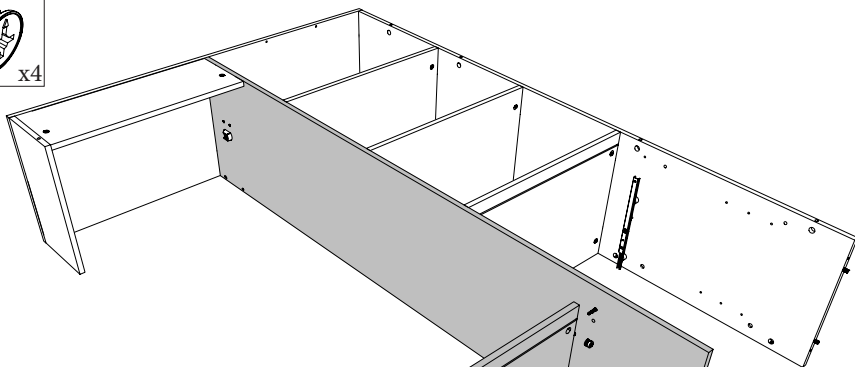
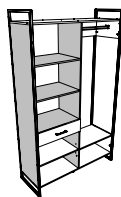


WF

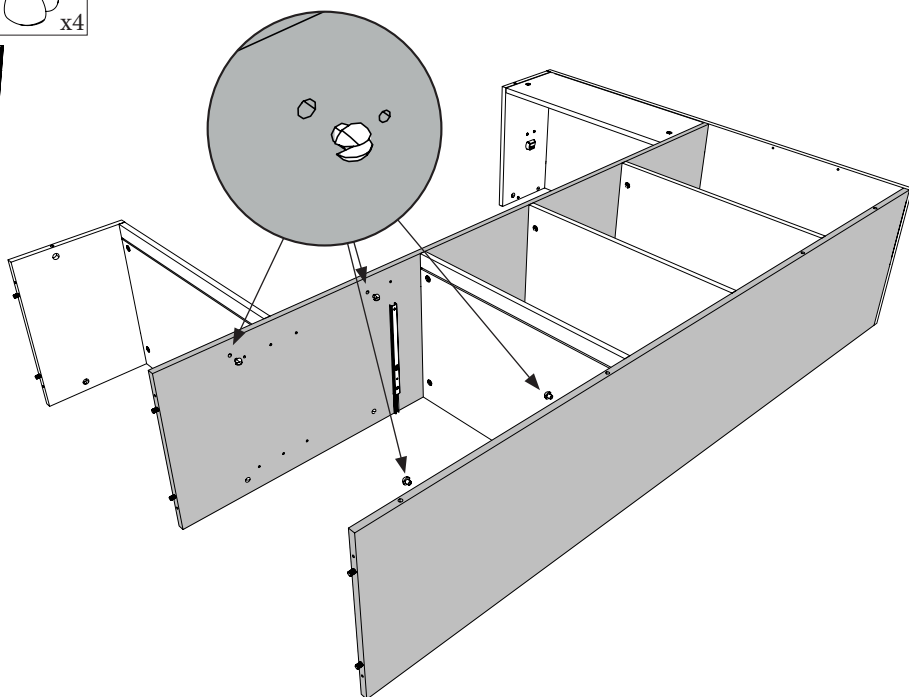
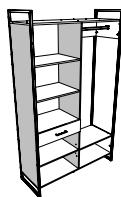
x2



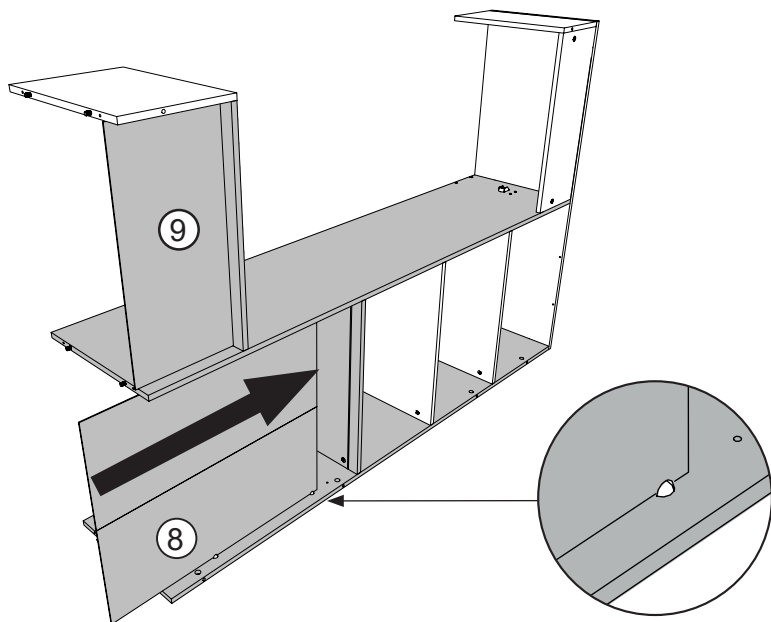
14 AI x4



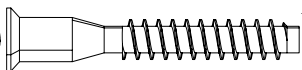
15 EO x4



16

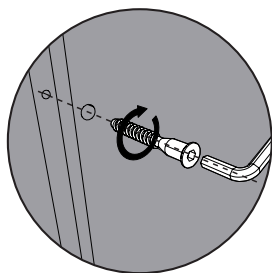
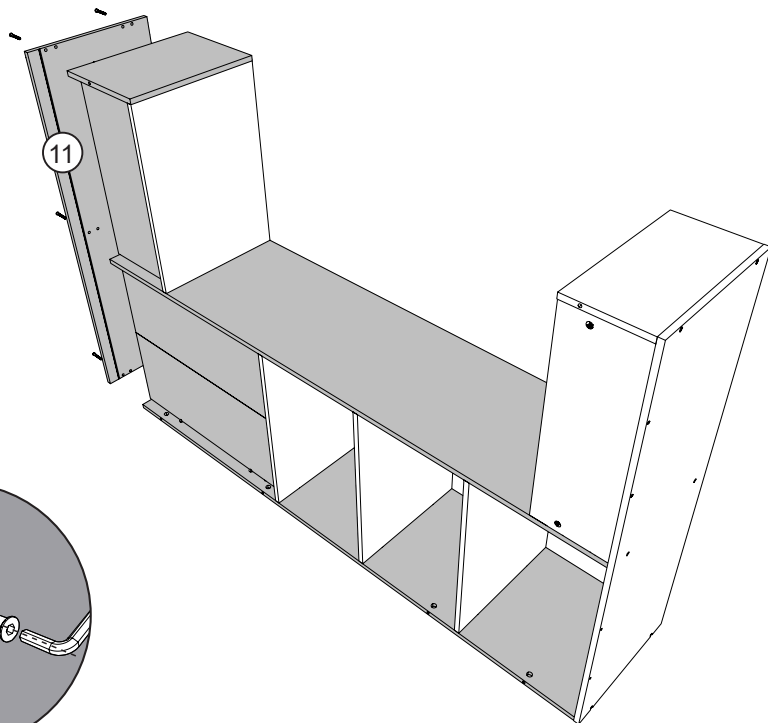
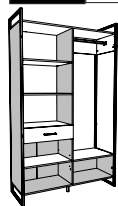


17




HW

x6



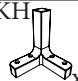
18

EP



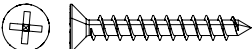
x6

CKH

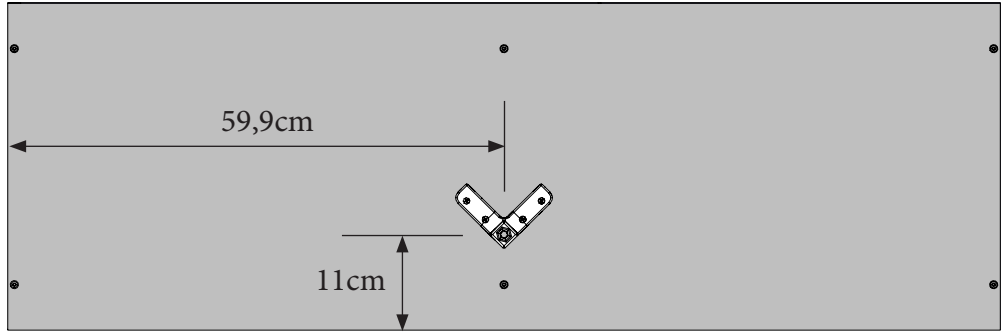
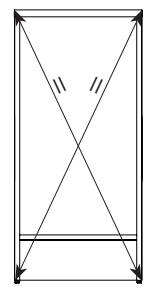
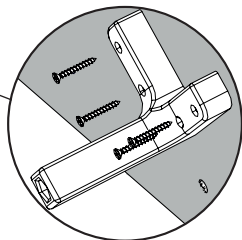
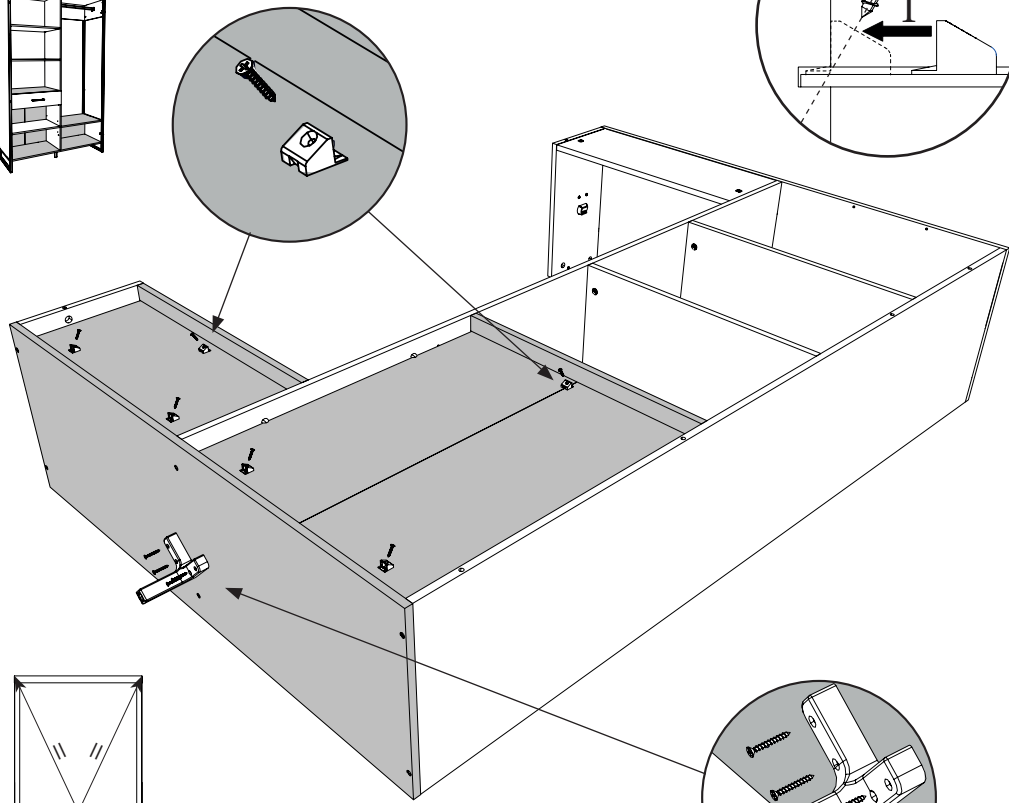
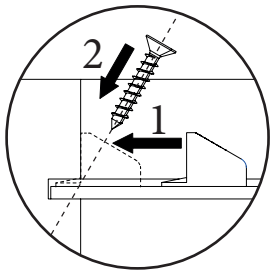


x1

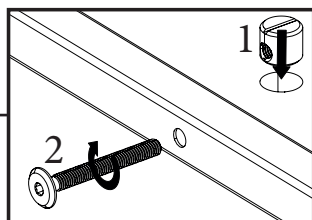
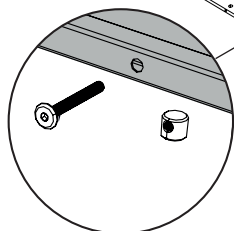
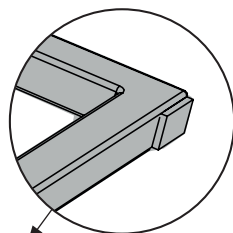
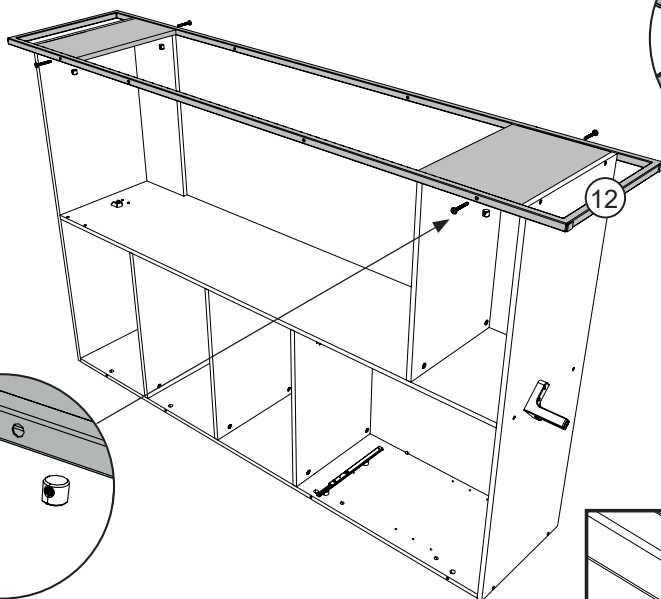
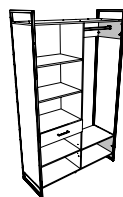
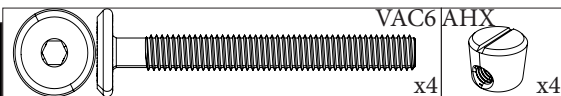
WF



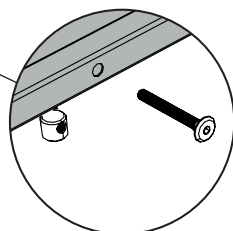
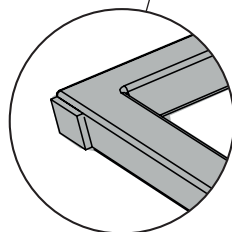
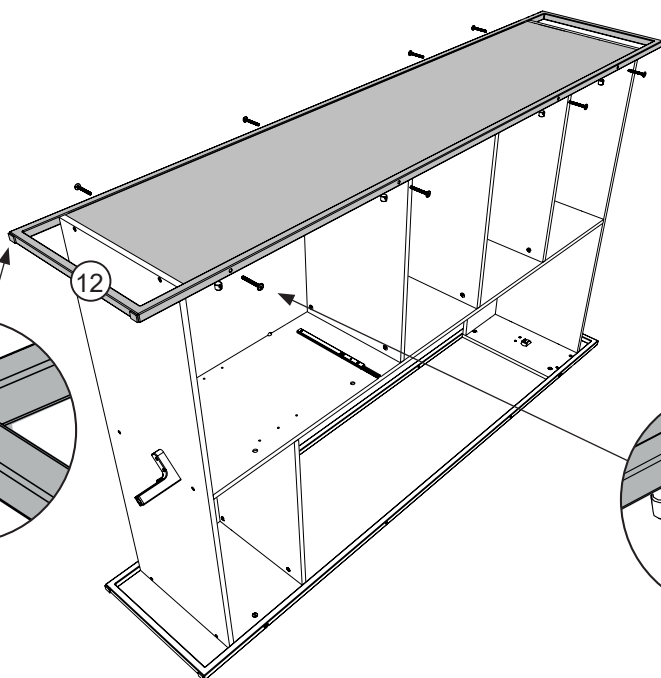
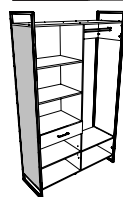
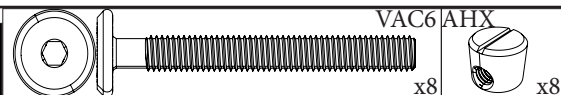
x4



19

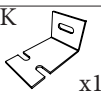


20



21

ZK



x1

VAF8



1.5cm



x2

DC



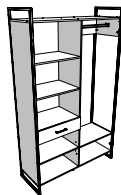
56,9cm

BWD



x1

x4

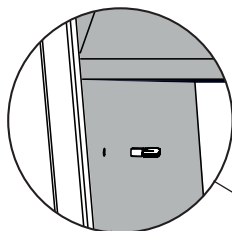
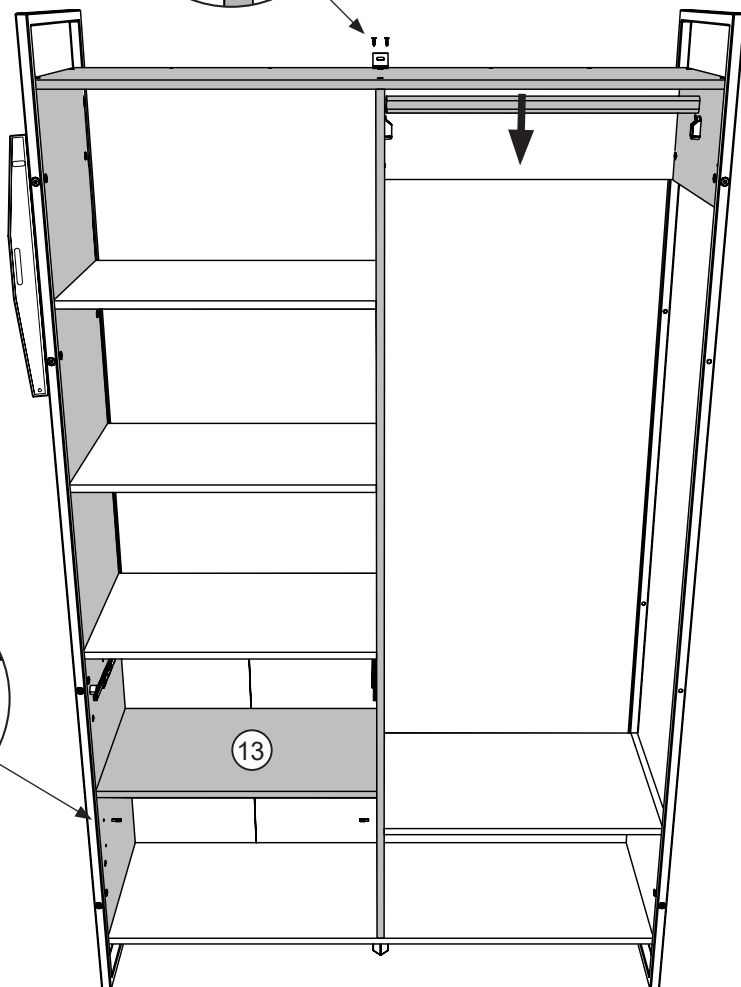
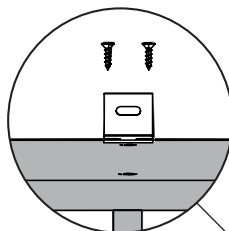


FR-Pour votre sécurité : Fixation du meuble au mur.


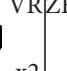
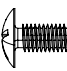

Attention, la fixation doit être réalisée par une personne compétente car cela nécessite des chevilles adaptées à la nature de votre mur.

EN-For your safety : the unit should be secured to the wall.

NB this should be carried out by a competent person as you must use the right rawl plug for your type of wall.



22

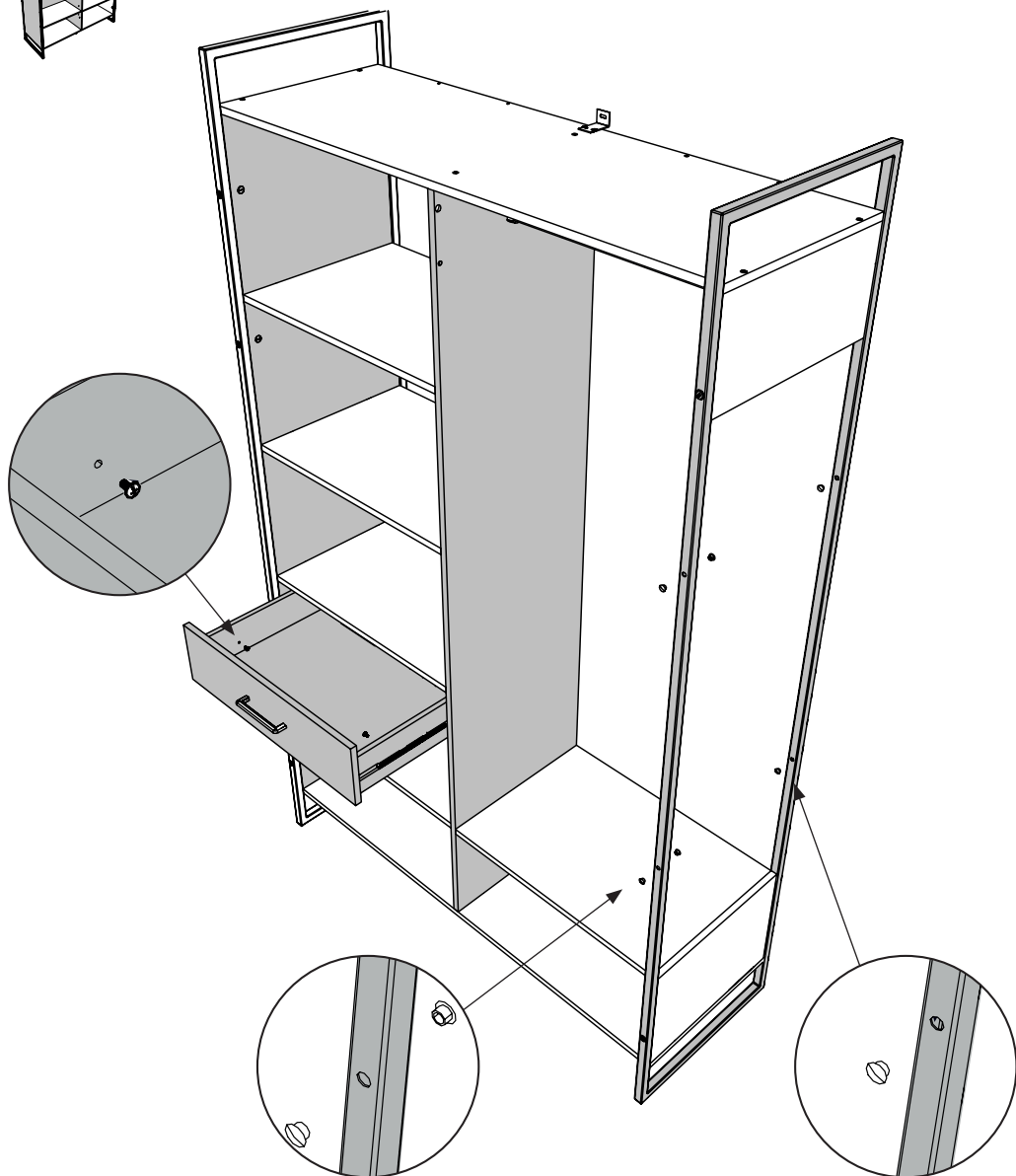
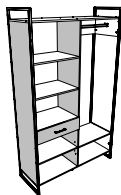


VRZF

x2

Noir / Black

x6

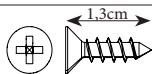


23

CP

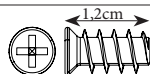


x1



VG

x1

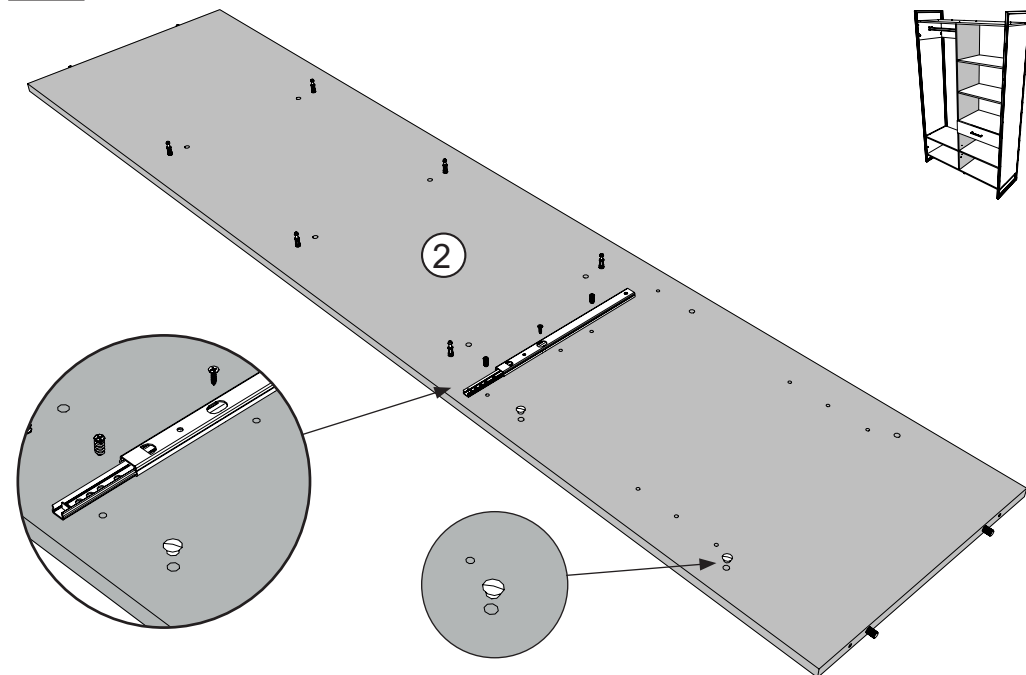


BWF/ZF

x2



Bruges / Wood x2



Extérieur du meuble	
1	
2	
3	

24

BXD



x1



1.2cm VAF4

OO



x3

ZF

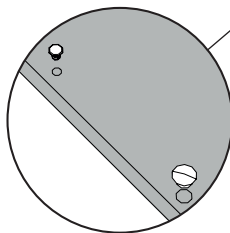
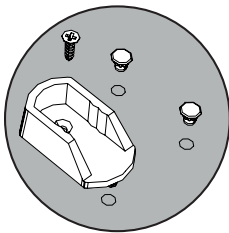
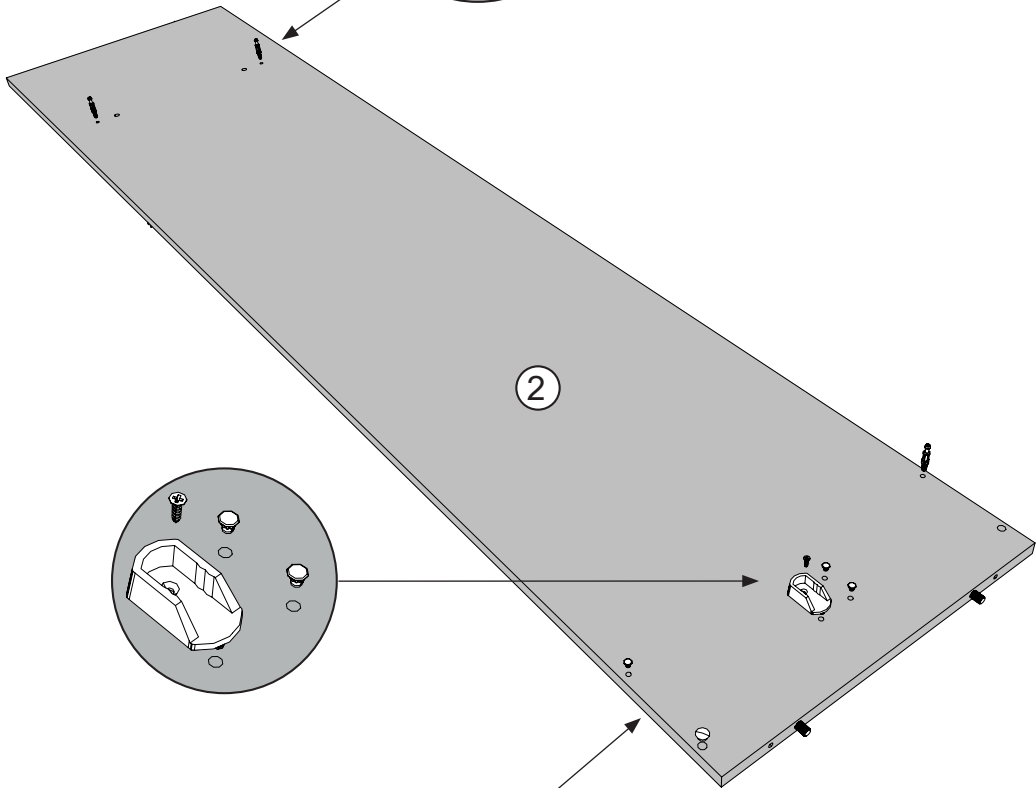
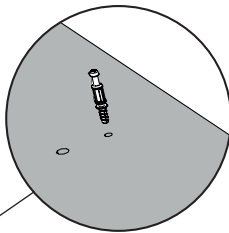
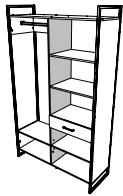


Bruges / Wood x1

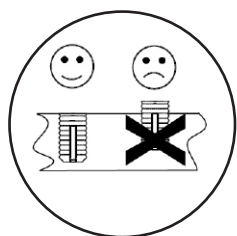
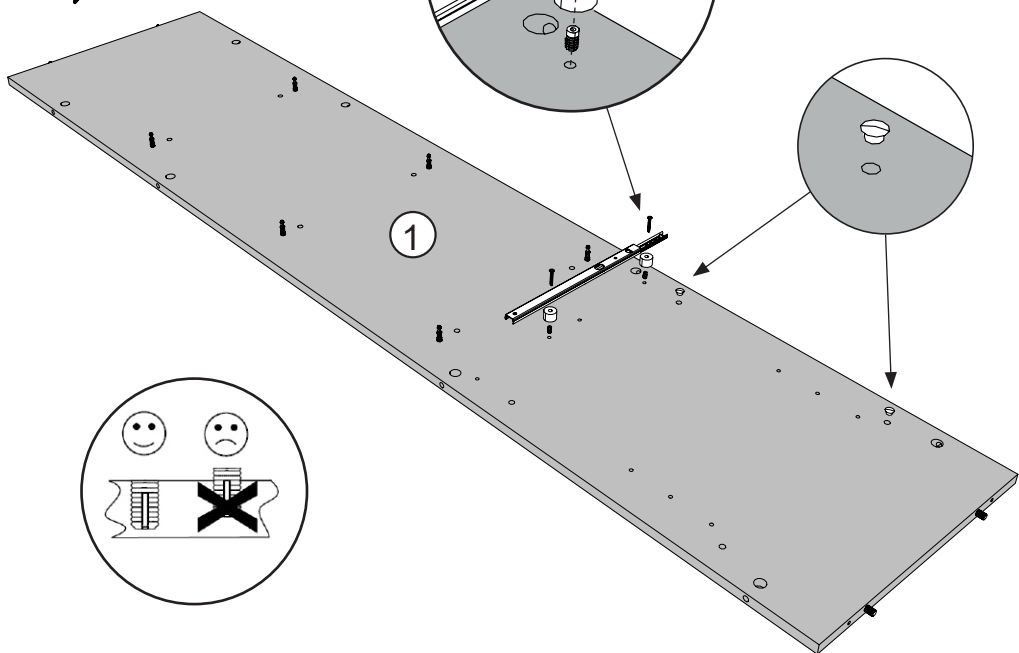
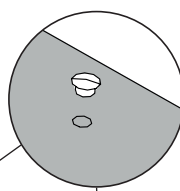
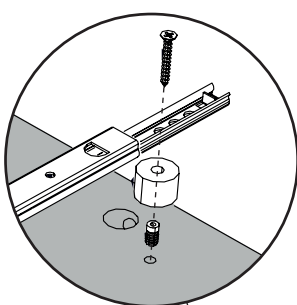
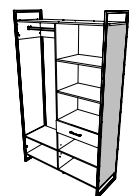
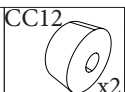
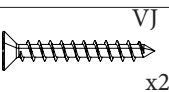
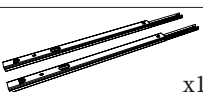
BSD




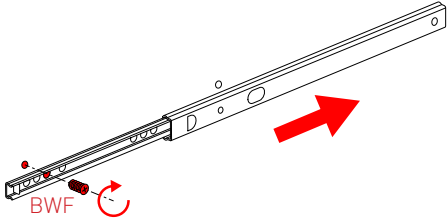
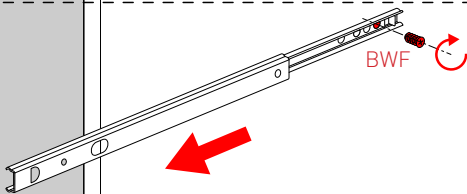


x3



25 CP

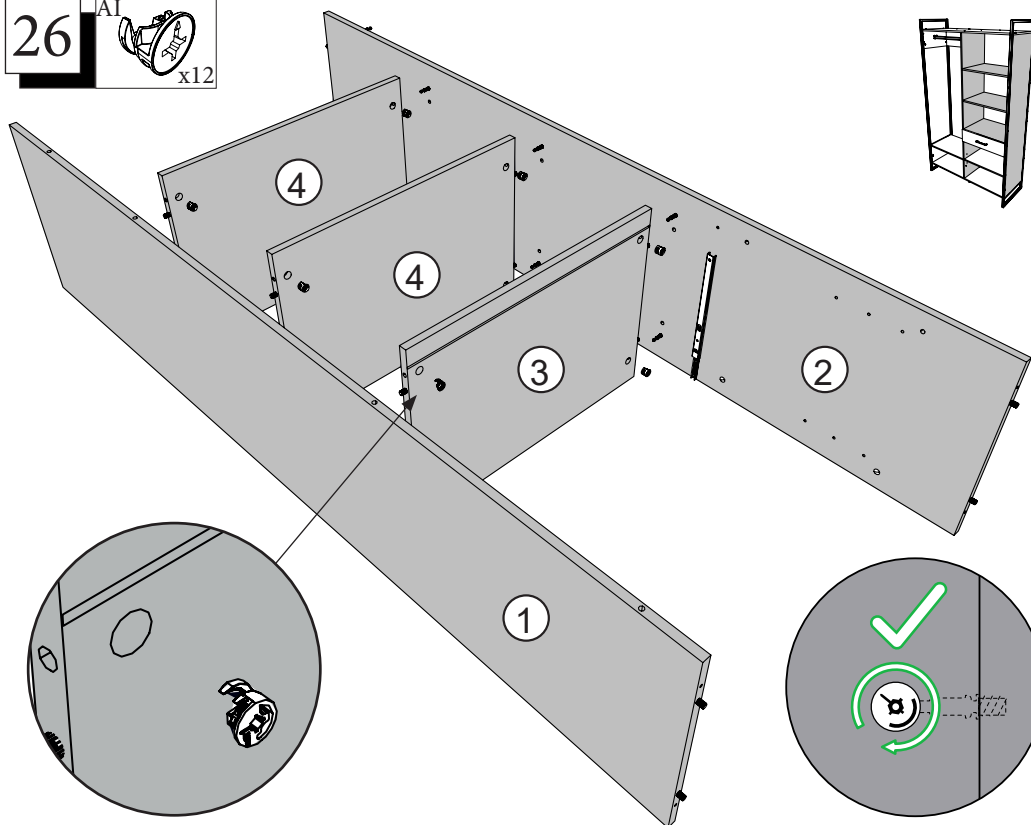


Exérieur du meuble	  
1	
2	

26



x12



27



ADM BXD

x2



x1



1.2cm VAF4 OO

x1

ZF

x3



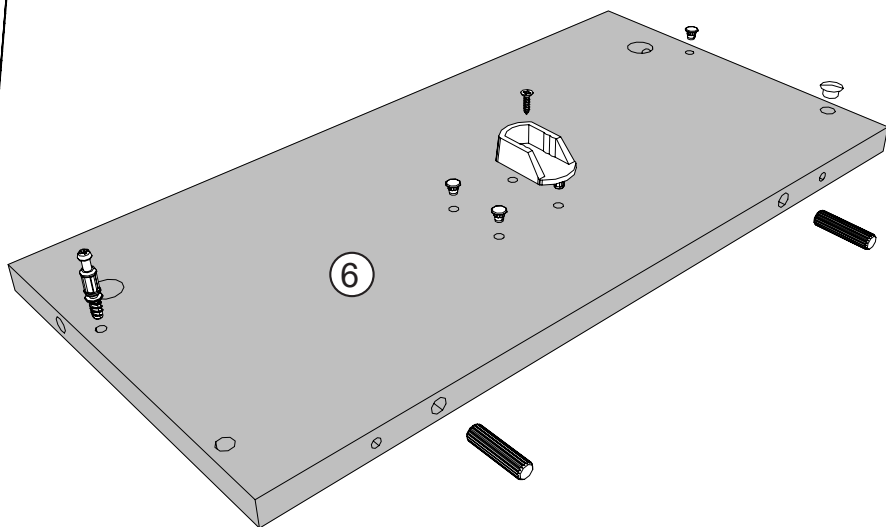
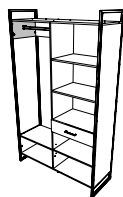
Bruges / Wood

BSD

x1



x1

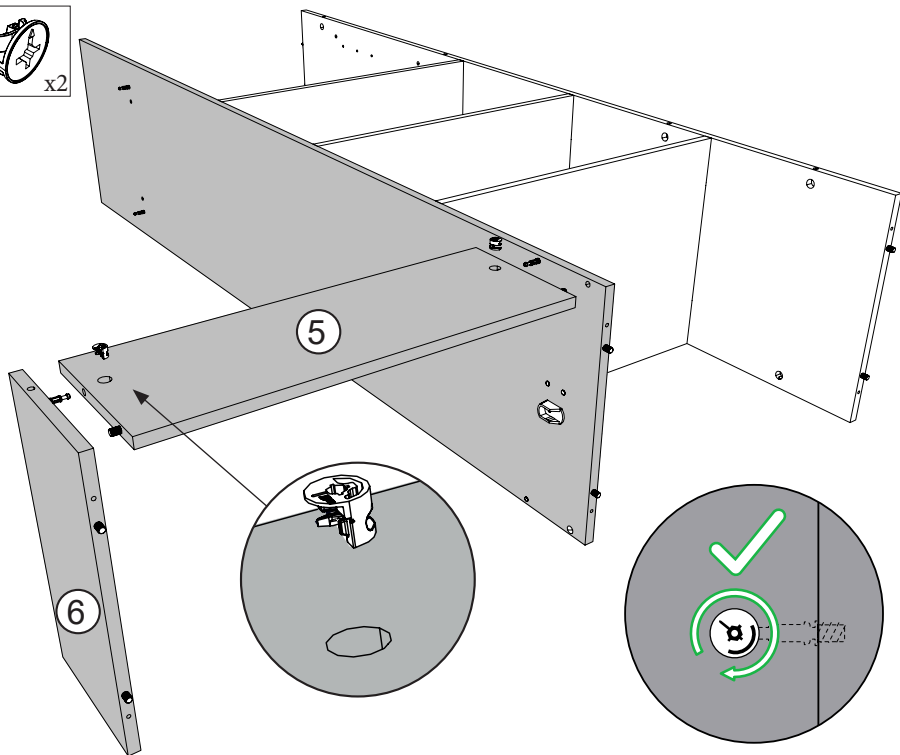
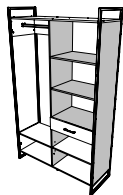


28

A1



x2



29

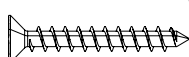


HW/HV

x6

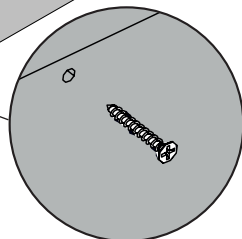
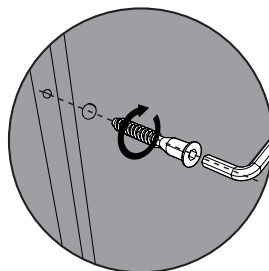
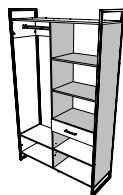
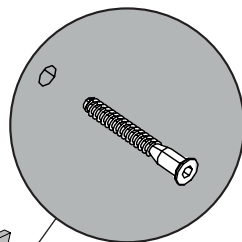
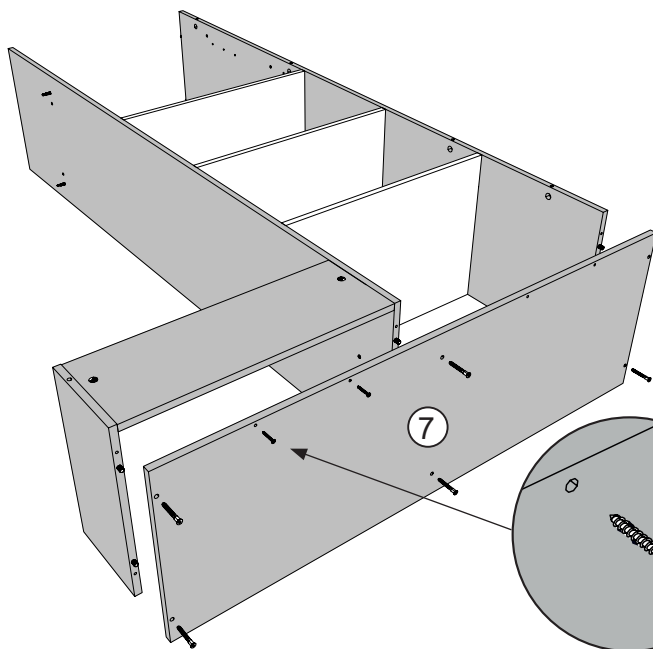


x1

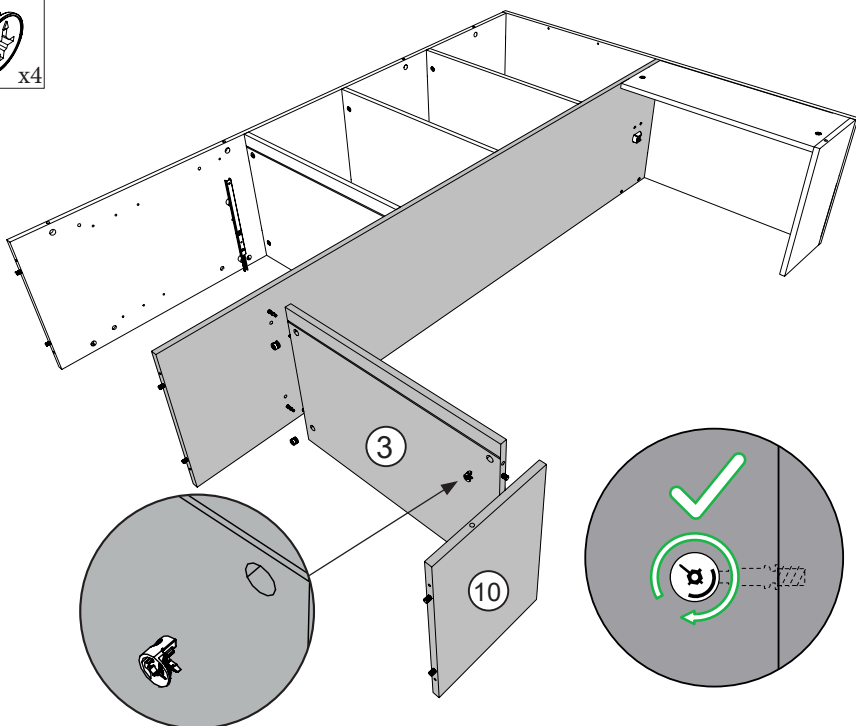
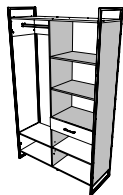


WF

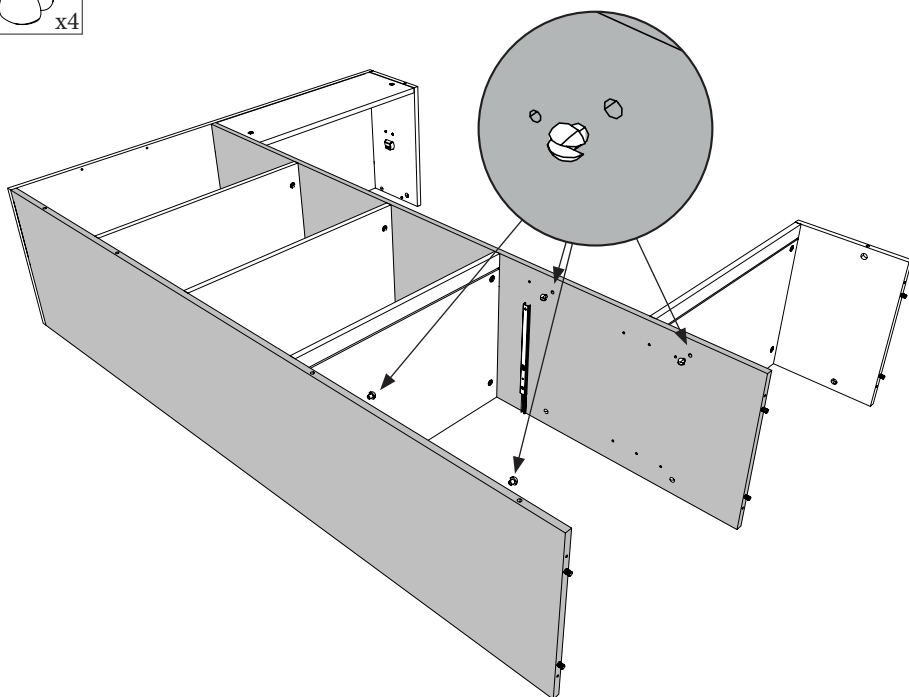
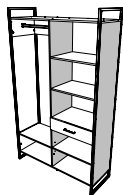
x2



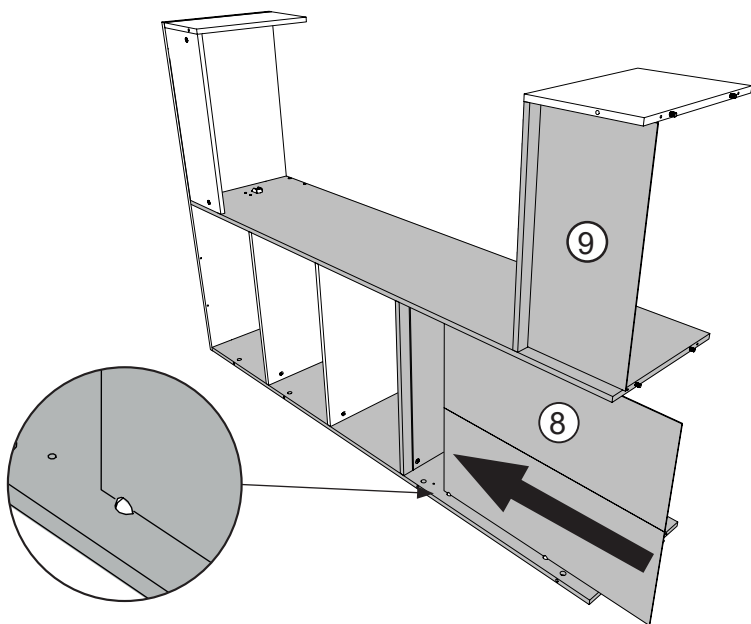
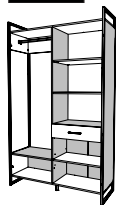
30 AI  x4



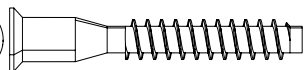
31 EO  x4



32

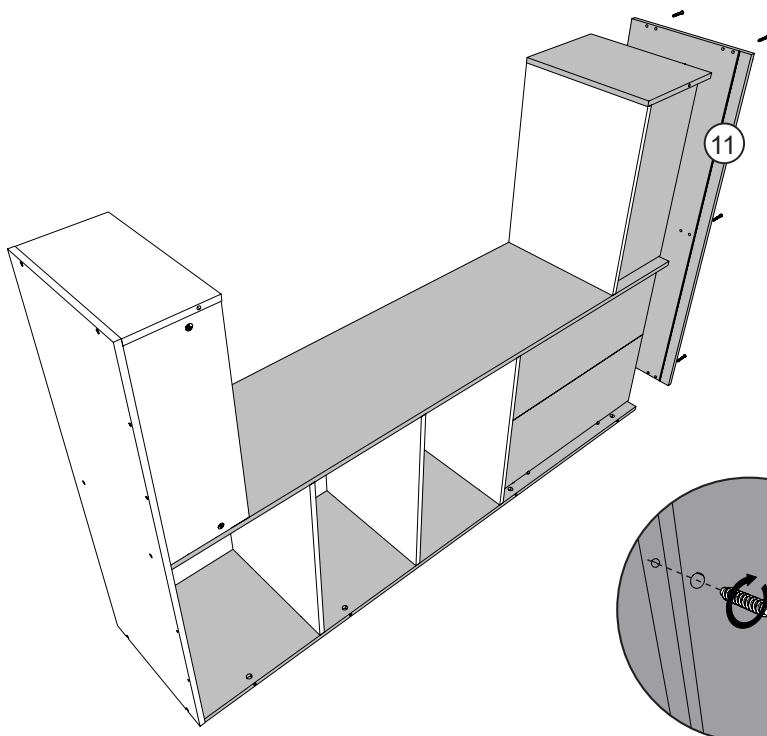
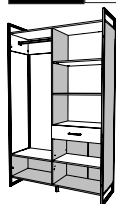


33




HW

x6




34

EP



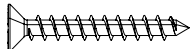
x6

CKH

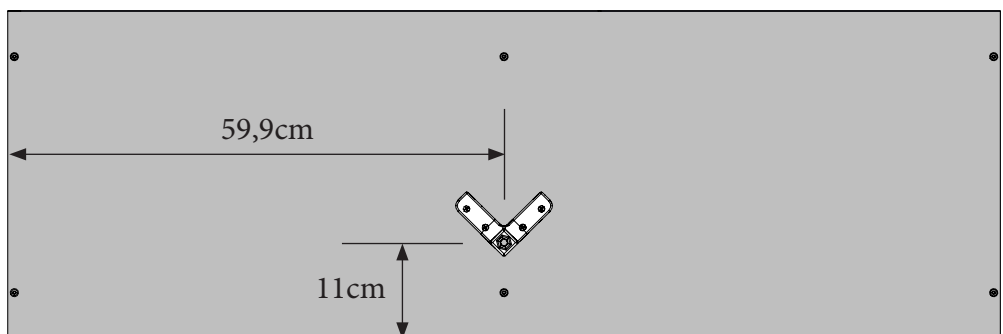
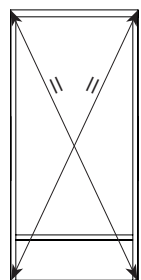
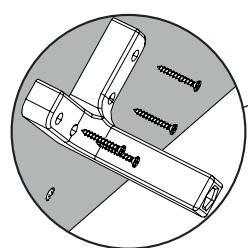
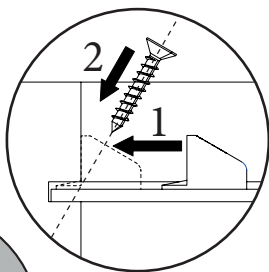
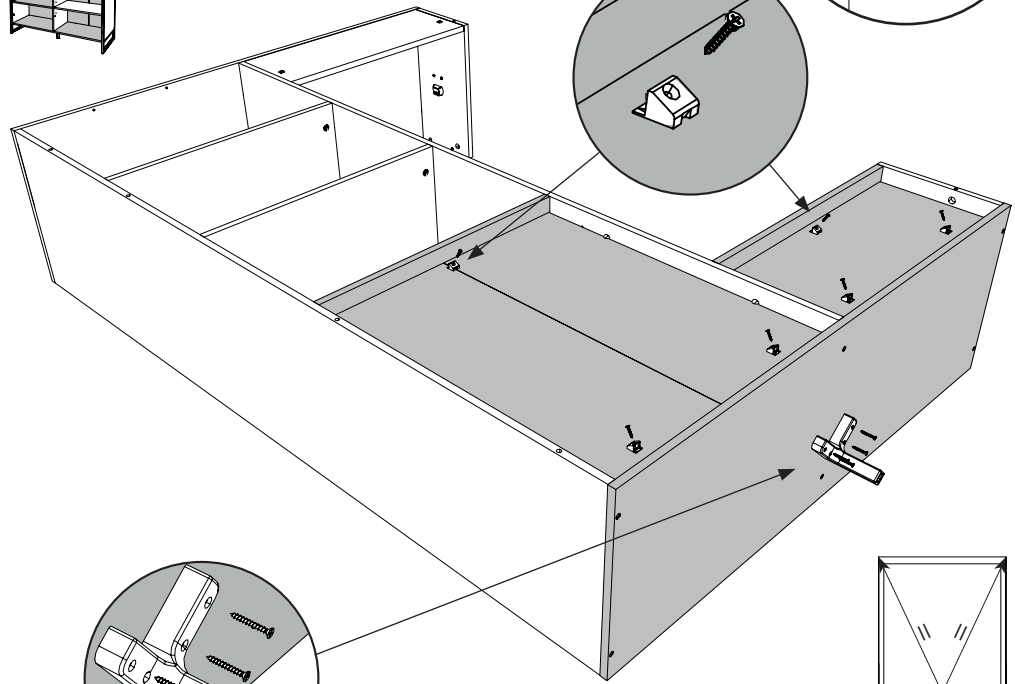
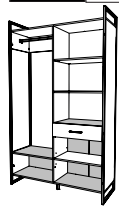


x1

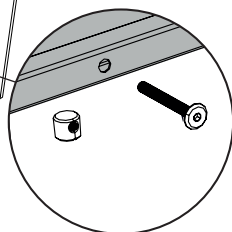
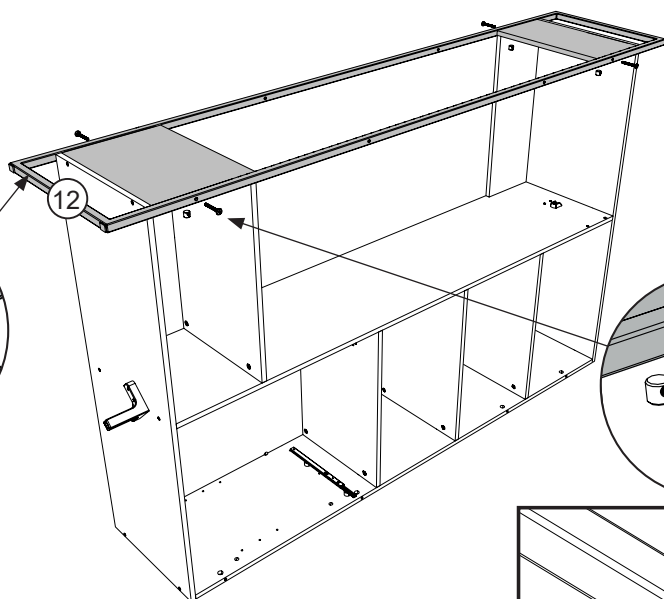
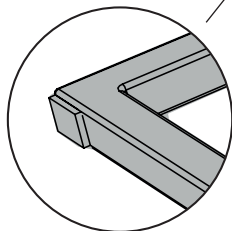
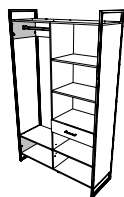
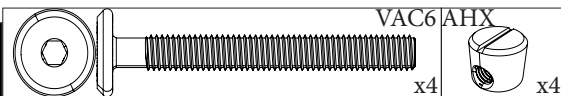
WF



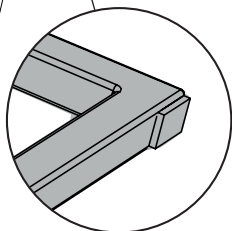
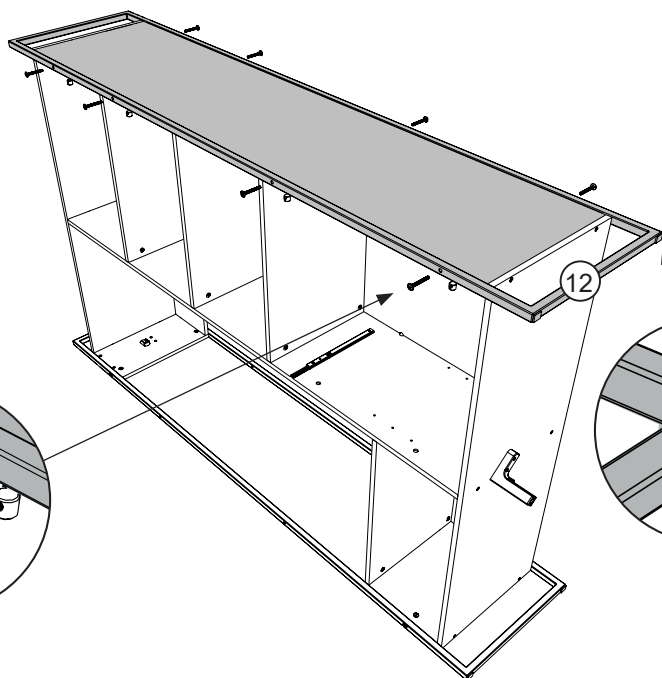
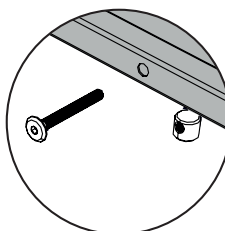
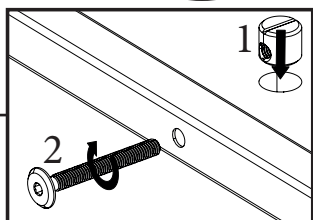
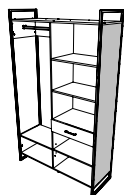
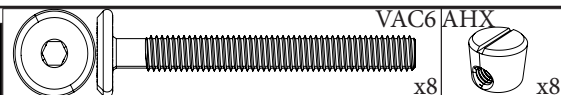
x4



35

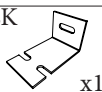


36



37

ZK



x1

VAF8



x2

DC

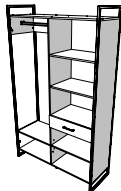


56,9cm

BWD



x4

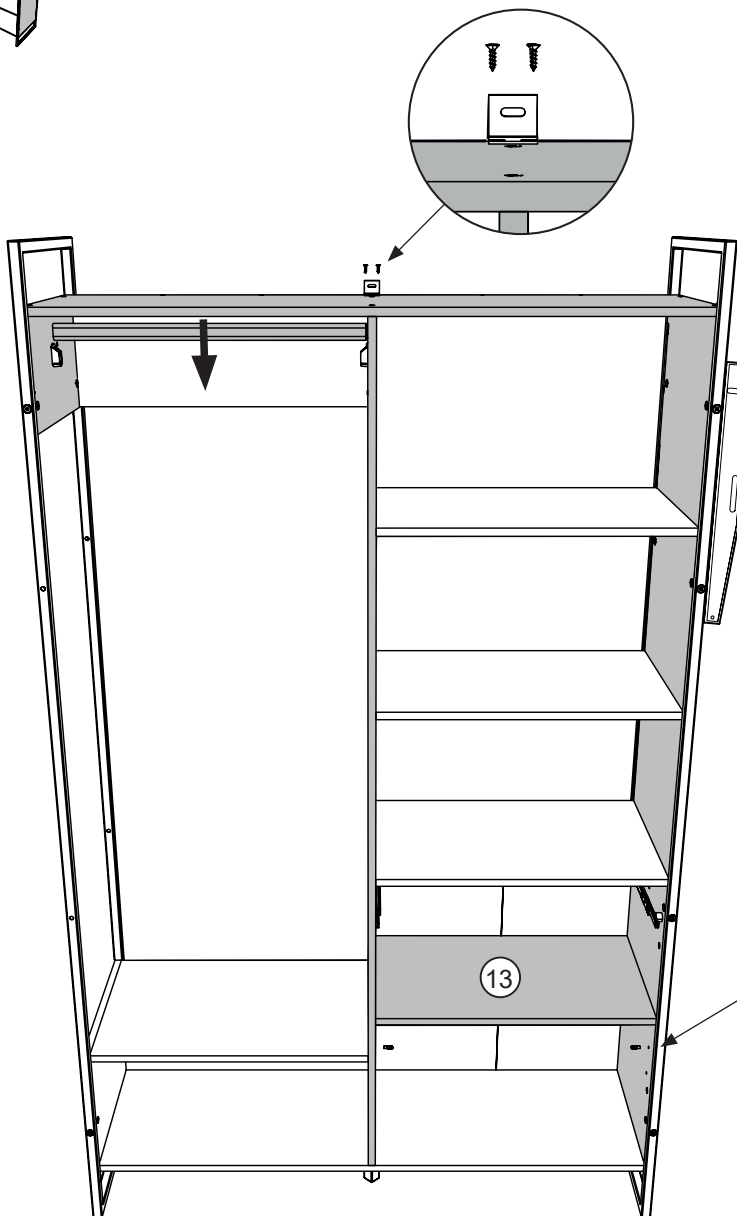


FR-Pour votre sécurité : Fixation du meuble au mur.

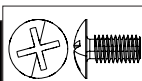
Attention, la fixation doit être réalisée par une personne compétente car cela nécessite des chevilles adaptées à la nature de votre mur.

EN-For your safety : the unit should be secured to the wall.

NB this should be carried out by a competent person as you must use the right rawl plug for your type of wall.



38

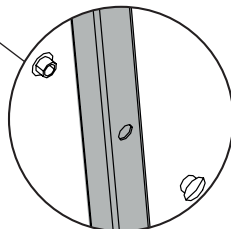
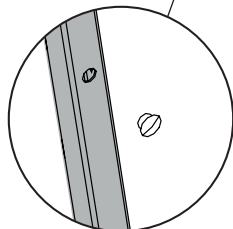
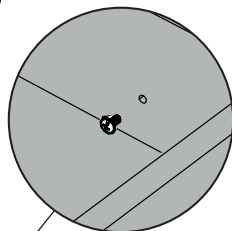
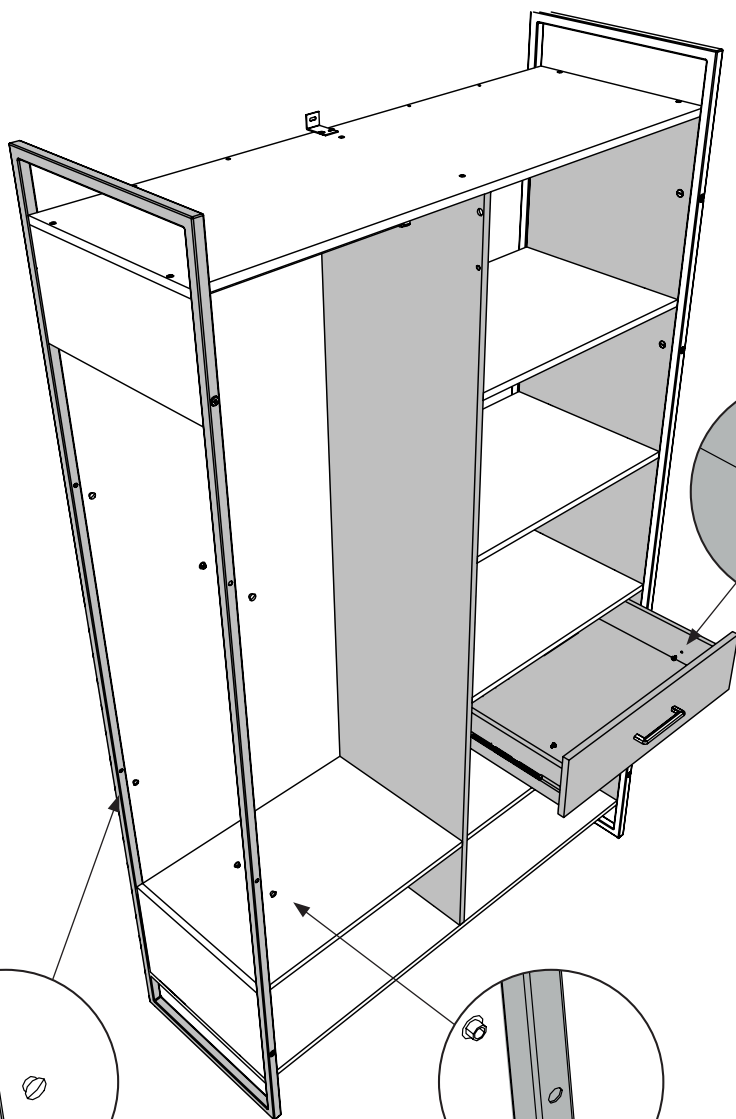
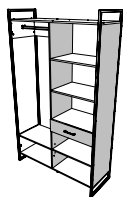


VRZF

x2

Noir / Black

x6





LE TRI
+ FACILE



FR

**Pensez à
donner ou recycler.**



Association

ou



Magasin

ou



Déchèterie

<https://quefairedemesdechets.fr>